

# Factbook

Fall, 2009

DSCC



**Dyersburg State Community College**  
Office of Institutional Advancement

**DYERSBURG STATE COMMUNITY COLLEGE  
FACT BOOK  
FALL 2009**

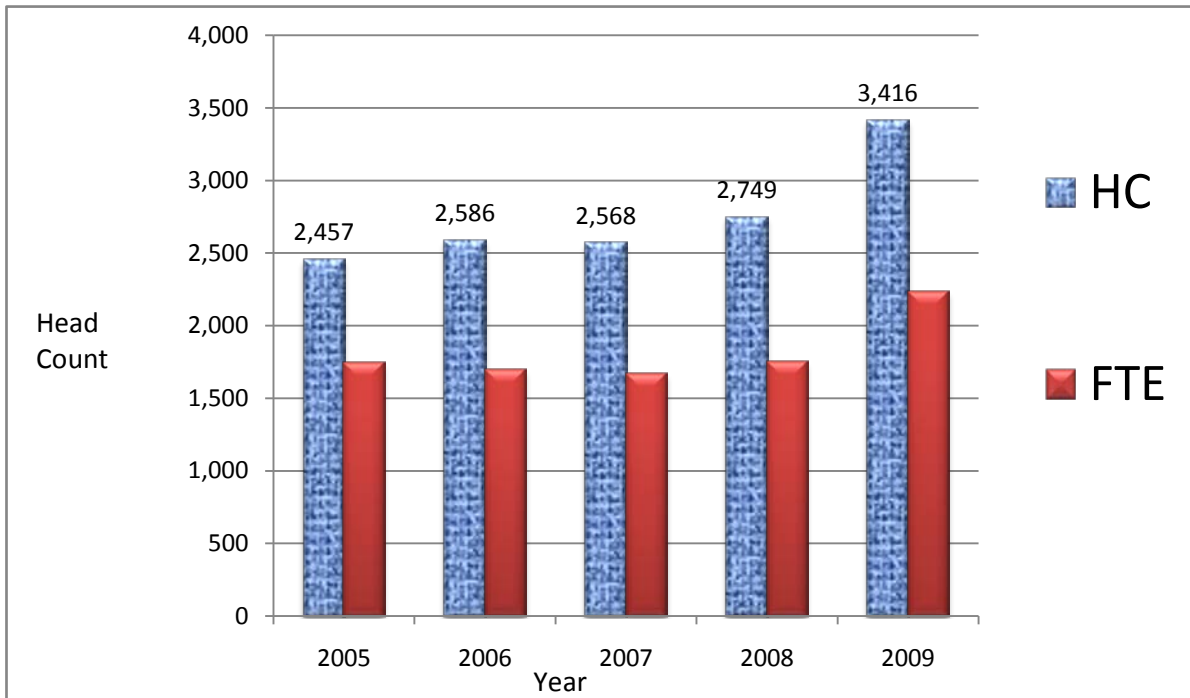
Table of Contents

<b>Student Information</b> .....	<b>1-10</b>
Headcount & FTE Enrollment Historical.....	1
Enrollment by Gender.....	2
Enrollment by Race.....	2
Enrollment by Full-Time & Part-Time.....	2
Headcount by Age.....	2
Enrollment by County – Historical.....	3-4
First Time Freshmen – Most Recent High School Graduates.....	5
Enrollment - Advanced Studies by High School.....	6
Programs in Service Area Schools.....	7
Enrollment – Distance Learning.....	8
Enrollment by Concentration.....	9-10
<b>Off-Campus Enrollment</b> .....	<b>11-12</b>
Gibson County Center.....	11
Tipton County Center.....	12
<b>Academic Information</b> .....	<b>13-25</b>
Learning Resource Center – 2005 - 2009.....	13
Computer Facilities – Fall 2009.....	14-15
Job Placement Report.....	16
Persistence to Graduation.....	17
Degrees Conferred.....	18-19
Retention – Fall to Spring Historical 2004-2008.....	20
Retention – Fall to Spring Historical 2008-2009.....	21
Retention – Fall to Fall Historical 2004-2009.....	22
Student Evaluation of Faculty.....	23
Median Income/Population 2000.....	24
<b>Faculty Information</b> .....	<b>25-26</b>
Full-Time Instructional Faculty by Rank.....	25
Academic Profile of Instructional Faculty.....	25
Average Academic – Year Salaries of Faculty.....	25
Faculty, SCH, FTE, Course Selections, & Average Class Size.....	26
Student Credit Hour Production by Department.....	26
<b>Budget and Financial Information</b> .....	<b>27-36</b>
Summary of Student Financial Aid Awarded.....	27
Fundraising and Enrollment by County.....	28
Summary of Private Giving.....	29
Student Loan Default Rate.....	30
Grant Programs.....	31
Revenues and Expenditures – Year End June 2008.....	32-33
7-County Area Payments & Salaries.....	34-35
Workforce Investment Act.....	36
<b>Testing Information</b> .....	<b>37-43</b>
MAPP Test Scores.....	37
CCTST Scores.....	38
CCTST Descriptive Statistics.....	39-43

**ENROLLMENT – HISTORICAL  
FALL SEMESTERS 2005– 2009**

YEAR	HC		FTE*	
	#	% Increase	#	% Increase
2005	2,457	-0.8%	1744.1	-1.4%
2006	2,586	5.3%	1693.47	-2.9%
2007	2,568	-0.7%	1668.2	-1.5%
2008	2,749	7.1%	1754.87	5.2%
2009	3,416	24.3%	2233.7	27.3%

◆ FTE-Full-Time Equivalent-Formula on which state funding to institutions is based. To calculate FTE-the number of hours by students divided by 15.



## ENROLLMENT BY GENDER

ENROLLMENT BY GENDER 2005 - 2009					
Gender	Fall	Fall	Fall	Fall	Fall
	2005	2006	2007	2008	2009
Female	1,753	1,848	1,810	1,961	2,405
Male	704	738	758	788	1,011
<b>Total</b>	<b>2,457</b>	<b>2,586</b>	<b>2,568</b>	<b>2,749</b>	<b>3,416</b>

## ENROLLMENT BY RACE\*

DISTRIBUTION BY ETHNIC ORIGIN: 2005 - 2009					
Classification	Fall	Fall	Fall	Fall	Fall
	2005	2006	2007	2008	2009
American Indian	11	16	11	9	149
Asian or Pacific Islander				12	19
Black	469	456	444	483	753
Hispanic	36	28	32	34	55
White	1,927	2,070	2,048	2,200	2,588
Other	14	16	32	11	48
<b>Total</b>	<b>2,457</b>	<b>2,586</b>	<b>2,567</b>	<b>2,749</b>	<b>3,612</b>

\* The way Ethnic groups are reported nationally changed in 2008 causing duplication across the categories.

## ENROLLMENT BY FULL-TIME (at least 12 hours) & PART-TIME STATUS (less that 12 hours)

DISTRIBUTION BY FULL-TIME & PART-TIME STATUS: 2005 - 2009					
Classification	Fall	Fall	Fall	Fall	Fall
	2005	2006	2007	2008	2009
Full-Time	1,428	1,315	1,280	1,299	1,825
Part-Time	1,029	1,271	1,288	1,450	1,591
<b>Total</b>	<b>2,457</b>	<b>2,586</b>	<b>2,568</b>	<b>2,749</b>	<b>3,416</b>

## HEADCOUNT BY AGE GROUP

Fall Semesters 2005 - 2009

AGE GROUP	2005	2006	2007	2008	2009	
					H/C	FTE
17 or less	30	258	319	392	443	281.53
18 - 20	850	864	887	983	1122	743.33
21 - 24	492	467	409	365	531	346.27
25 - 34	574	504	528	536	706	463.4
35 - 64	509	492	425	471	613	398.53
Over 64	2	1		2	1	0.6
<b>TOTAL</b>	<b>2457</b>	<b>2586</b>	<b>2568</b>	<b>2749</b>	<b>3416</b>	<b>2233.66</b>

♦ Average student age is

27

**ENROLLMENT - HISTORICAL  
FALL SEMESTER 2005 - 2008**

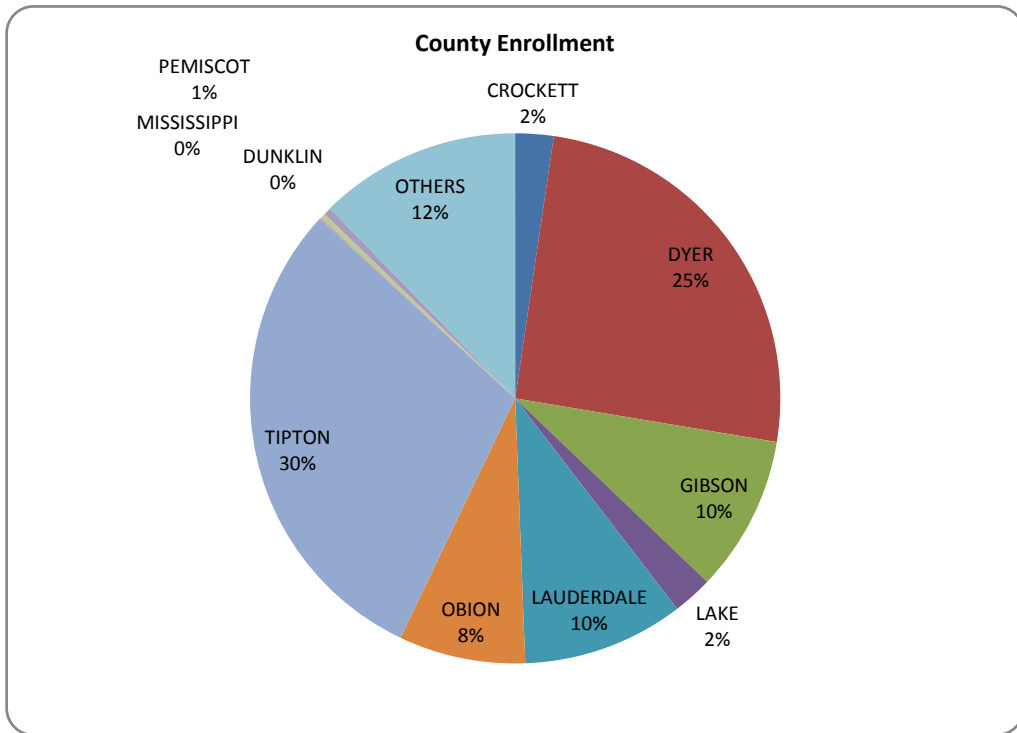
**HEADCOUNT BY HIGH SCHOOL AND  
HEADCOUNT, STUDENT CREDIT HOURS, & FTE  
FOR FALL SEMESTER 2009**

High School	2005	2006	2007	2008	2009		
					H/C	SCH	FTE
<b>Crockett County Total</b>							
Crockett Co. H.S.	29	33	22	62	63	579	38.60
<b>Dyer County Total</b>	449	403	369	574	622	6100	406.67
Dyer County H.S.	191	191	170	289	353	3372	224.80
Dyersburg H.S.	258	212	199	285	269	2728	181.87
<b>Gibson County Total</b>	164	183	147	201	228	2251	150.06
Bradford H.S.	7	9	7	9	15	141	9.40
Gibson County H.S.	71	77	60	80	74	724	48.26
Humboldt H.S.	14	16	14	15	21	237	15.80
Kenton H.S.	3	3					
Milan H.S.	18	27	24	25	27	263	17.53
Peabody H.S.	51	51	42	72	91	886	59.07
<b>Lake County Total</b>							
Lake County H.S.	55	50	33	46	72	739	49.27
<b>Lauderdale County Total</b>	220	217	208	186	270	2606	173.73
Halls H.S.	79	84	73	66	89	863	57.53
Ripley H.S.	141	133	135	120	181	1743	116.20
<b>Obion County Total</b>	172	174	174	177	230	2380	158.67
Obion County Central H.S.	117	117	135	107	131	1325	88.33
South Fulton H.S.	11	10	7	31	38	361	24.07
Union City H.S.	44	47	32	39	61	694	46.27
<b>Tipton county Total</b>	390	391	451	586	784	7500	500.00
Brighton H.S.	86	83	133	232	307	2896	193.07
Covington H.S.	174	174	177	177	223	2268	151.20
Munford H.S.	130	134	141	177	243	2244	149.60
Rosemark Academy					11	92	6.13
<b>AR &amp; MO Total</b>	12	17	15	13	23	233	15.40
Kennett H.S.	0	0			2	19	1.27
Caruthersville H.S.	9	7	5	6	9	89	5.93
Hayti H.S.	2	5	6	3	5	55	3.67
North Pemiscot H.S	1	2	3	2	1	12	0.80
Portageville H.S.	0	3	1	2	6	58	3.73
Other High Schools	713	858	919	339	775	7668	511.19
G. E. D.	253	260	230	565	352	3476	23173
<b>Total</b>	2457	2586	2568	2749	3419	33532	25176.59

**ENROLLMENT BY COUNTY - HISTORICAL**  
**FALL 2005 - 2009**

County	2005	2006	2007	2008	2009		
					H/C	SCH	FTE
CROCKETT	41	48	41	67	80	738	49.20
DYER	666	676	684	759	864	8489	565.93
GIBSON	248	277	237	289	325	3263	217.53
LAKE	78	84	62	67	82	802	53.47
LAUDERD.	309	308	289	240	336	3311	220.73
OBION	219	227	236	211	264	2788	185.87
TIPTON	643	729	751	772	1016	9765	651.00
<b>7- COUNT</b>	2204	2349	2300	2405	2967	29156	1943.733
<b>TOTAL</b>	93.1%	93.3%	90.6%	87.5%	86.9%		
DUNKLIN	1	2	5	1	3	24	1.60
MISSISSIP	5	4	5	7	10	112	7.47
PEMISCO	14	15	14	11	16	144	9.60
OTHERS	143	149	216	325	420	4069	271.27
<b>TOTAL</b>	2367	2519	2540	2749	3416	33505	2233.7

◆ An average of 87.5% of the DSCC enrollment comes from the 7-county service area.



**FIRST - TIME FRESHMEN  
 MOST RECENT HIGH SCHOOL GRADUATES  
 BY HIGH SCHOOL (IN TN 7-COUNTY SERVICE AREA)**

HIGH SCHOOL	FALL	FALL	FALL	FALL	FALL	FALL	FALL
	2003	2004	2005	2006	2007	2008	2009
Bradford H.S.	2	0	0	0	1		4
Brighton H.S.	32	25	25	38	58	51	59
Covington H.S.	36	30	32	28	41	27	38
Crockett H.S.	4	4	7	13	5	5	4
Dyer County H.S.	52	34	65	49	51	69	58
Dyersburg H.S.	53	43	46	47	40	58	39
Gateway Christian High School							20
Gibson County H.S.	6	11	11	14	8	20	11
Halls H.S.	16	13	12	26	13	15	14
Humboldt H.S.	1	3	2	3			1
Lake County H.S.	7	12	4	11	5	10	13
Milan H.S.	3	1	1	10	3	1	
Munford H.S.	35	26	22	36	35	30	36
Obion County Central H.S.	29	17	21	36	41	24	22
Peabody H.S.	17	12	6	11	8	12	7
Ripley H.S.	18	29	19	32	20	21	26
Rosemark Academy							5
South Fulton H.S.	3	1	3	2		2	2
Union City H.S.	7	5	7	14	5	5	10
<b>Total</b>	<b>321</b>	<b>266</b>	<b>283</b>	<b>370</b>	<b>334</b>	<b>350</b>	<b>369</b>

**ENROLLMENT OF ADVANCED STUDIES STUDENTS  
BY HIGH SCHOOL  
FALL SEMESTERS 2005 - 2009**

High School	Fall 2005		Fall 2006		Fall 2007		Fall 2008		Fall 2009	
	Students	FTE	Students	FTE	Students	FTE	Students	FTE	Students	FTE
Berean Christian									1	0.4
Brighton H.S.			4	0.8						
Brighton H.S.			70	16.8	44	10.93	76	17.73	114	26.53
Covington H.S.	3	0.8	7	1.4	10	2.00	5	1.00	2	0.40
Crockett County H.S.							32	17.07	34	18.13
Dyer County H.S.	17	5.8	61	21.73	71	25.67	108	51.40	110	42.80
Dyersburg H.S.			42	9.8	96	24.33	82	21.67	36	9.53
Family Christian Academy									1	0.60
Gateway Christian Schools	4	1.6	2	0.67	4	1.47	12	4.40	6	2.53
Gibson County H.S.	1	0.2	7	1.4	2	0.60	20	4.00	1	0.20
Halls H.S.							1	0.20	9	1.87
Homelife Academy					3	1.07			1	0.67
Lake County									11	2.27
Munford H.S.	1	0.2	35	7.4	47	9.60	41	9.60	61	13.80
Peabody H.S.	6	1.2	17	3.6	18	3.60	18	3.60	29	5.80
Ripley H.S.									18	3.67
South Fulton H.S.			8	1.6	15	3.00	21	4.20	25	5.00
<b>TOTALS</b>	<b>32</b>	<b>9.8</b>	<b>253</b>	<b>65.2</b>	<b>310</b>	<b>82.27</b>	<b>416</b>	<b>134.87</b>	<b>459</b>	<b>134.20</b>



**DSCC PROGRAMS IN  
SEVEN-COUNTY SERVICE AREA SCHOOLS  
2009-2010**

County	High School	Perkins IV	Upward Bound
Dyer	Dyer County H.S.	X	X
	Dyersburg H.S.	X	
Gibson	Bradford H.S.	X	
	Gibson County H.S.	X	
	Peabody H.S.	X	X
Lake	Lake County H.S.	X	X
Lauderdale	Halls Junior H.S.		
	Ripley Middle School		
	Halls H.S.	X	X
	Ripley H.S.	X	
Obion	Obion Co. Central H.S.	X	
	South Fulton H.S.	X	
	Union City H.S.	X	
Tipton	Brighton H.S.	X	
	Covington H.S.	X	
	Munford H.S.	X	

**DISTANCE LEARNING ENROLLMENT**  
**Fall 2008-Spring 2010**

CATEGORY	Fall 2008			Spring 2009		
	# of courses offered	Duplicated H/C by Category	Undup. H/C by Category	# of courses offered	Duplicated H/C by Category	Undup. H/C by Category
On-line, Internet	62	919	508	63	964	521
RODP courses	159	342	307	172	425	368
<b>TOTAL</b>	221	1261	815	235	1389	889

CATEGORY	Fall 2009			Spring 2010		
	# of courses offered	Duplicated H/C by Category	Undup. H/C by Category	# of courses offered	Duplicated H/C by Category	Undup. H/C by Category
On-line, Internet	67	1168	566	149	1305	664
RODP courses	174	539	451	66	569	485
<b>TOTAL</b>	241	1707	1017	215	1874	1149

**ENROLLMENT - HISTORICAL  
FALL SEMESTERS 2005 - 2009**

**HEADCOUNT BY CONCENTRATION**

<b>Major/Concentration</b>	<b>2005</b>	<b>2006</b>	<b>2007</b>	<b>2008</b>	<b>2009</b>
Allied Health	73	73	76	64	93
Biology/Forestry	34	27	25	24	35
Business Transfer	131	139	131	102	112
Chemistry	6	7	6	5	9
Computer Science	37	27	36	27	33
Criminal Justice	71	65	65	58	115
Elementary Education*	155	163	104	68	29
Secondary Education	59	60	57	67	38
English	22	10	9	11	21
General Studies	125	131	136	139	247
General Technology			5	5	13
Health, P.E. & Recreation	31	30	28	41	45
History	13	20	14	10	14
Mathematics	2	9	5	3	10
Medical Oriented	63	63	65	70	105
Music	16	9	9	11	17
Pre-Nursing	49	46	38	69	112
Pre-Veterinary Medicine	16	12	13	28	29
Psychology	55	37	55	40	55
Social Sciences	6	3	1		2
Sociology/Social Work	44	41	38	48	67
Teaching K-6*		5	36	73	170
Undecided	140	118	101	143	33
Web Technology				2	3
<b>University Parallel Total</b>	<b>1,148</b>	<b>1,095</b>	<b>1,053</b>	<b>1108</b>	<b>1407</b>
<b>Regents A.S. Concentration</b>	<b>10</b>	<b>8</b>	<b>7</b>	<b>8</b>	<b>8</b>

\*Teaching K-6 and Elementary Education Combined in 2007

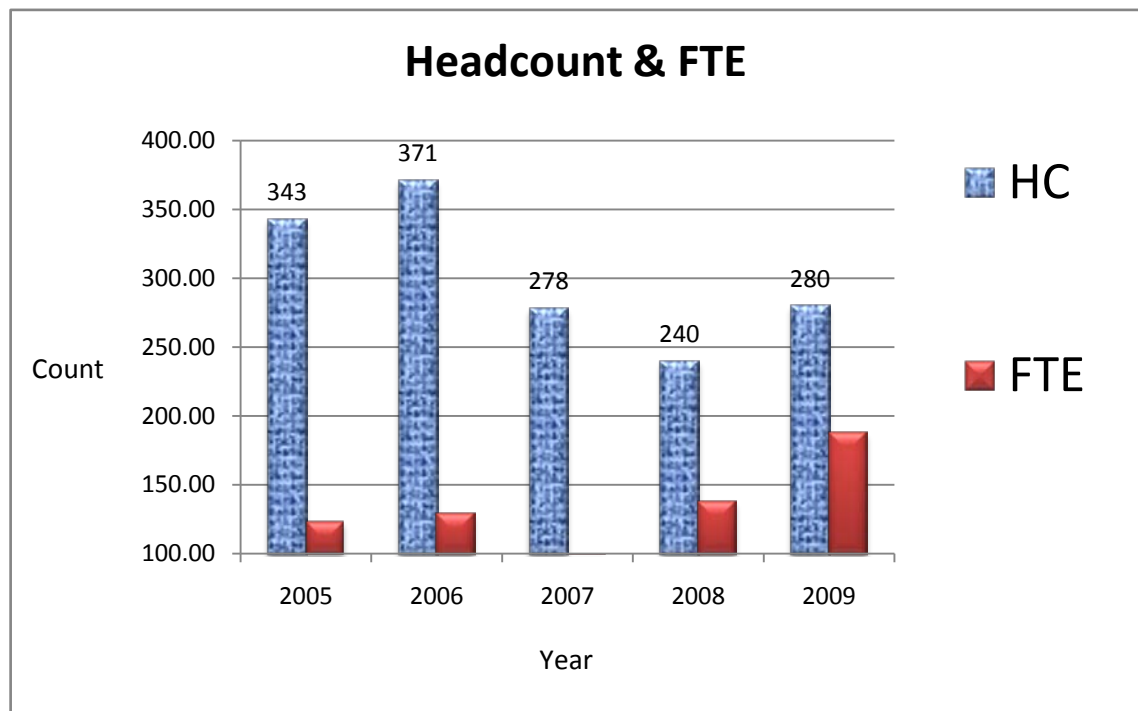
**ENROLLMENT - HISTORICAL  
FALL SEMESTERS 2005 - 2009**

**HEADCOUNT BY CONCENTRATION**

<b>Major/Concentration</b>	<b>2005</b>	<b>2006</b>	<b>2007</b>	<b>2008</b>	<b>2009</b>
Accounting Technology	41	34	31	30	37
Administrative Office Support	52	57	38	31	54
Business Administration	72	62	55	60	78
Management	22	18	20	14	23
<b>Business Total</b>	<b>187</b>	<b>171</b>	<b>144</b>	<b>135</b>	<b>192</b>
<b>Communications &amp; Info. Tech</b>	<b>62</b>	<b>52</b>	<b>47</b>	<b>36</b>	<b>12</b>
<b>Early Childhood Education</b>	<b>66</b>	<b>63</b>	<b>57</b>	<b>65</b>	<b>90</b>
<b>Health Information Tech.</b>	<b>52</b>	<b>57</b>	<b>72</b>	<b>72</b>	<b>79</b>
Comp. Sys. Oper. & Maint. Tech. Cert.	3	2	3	4	7
Networking & Cyber Security Certificate				11	31
Network Routing Certificate				2	2
Software Application Certificate				10	18
Early Childhood Tech. Cert.	4	19	17	29	48
EMT - Concentration Cert					22
EMT - Paramedic Cert					24
Medical Coding Tech. Cert.	38	28	20	25	31
Medical Transcription Aca.	17	16	9	11	
Surg. Tech. Aca. Cert.	27	33	2		
Web Page Authoring					1
<b>Certificates Total</b>	<b>89</b>	<b>98</b>	<b>51</b>	<b>92</b>	<b>184</b>
Industrial Electronics- <b>Cancelled</b>					
Manufacturing Systems Tech.	15	8	9	2	1
<b>Indust. Elec. Tech. Total</b>	<b>15</b>	<b>8</b>	<b>9</b>	<b>2</b>	<b>1</b>
<b>Justice Services Total</b>	<b>29</b>	<b>20</b>	<b>30</b>	<b>27</b>	<b>36</b>
<b>Paramedic Total</b>					<b>5</b>
Core Nursing	425	489	461	431	612
Nursing	128	85	144	183	170
<b>Nursing Total</b>	<b>553</b>	<b>574</b>	<b>605</b>	<b>614</b>	<b>782</b>
<b>Non-Degree Seeking Total</b>	<b>244</b>	<b>439</b>	<b>490</b>	<b>585</b>	<b>616</b>
<b>Regents Info. Tech. - Prof Studies</b>	<b>2</b>	<b>1</b>	<b>3</b>	<b>5</b>	<b>4</b>
<b>DSCC TOTAL</b>	<b>2,457</b>	<b>2,586</b>	<b>2,568</b>	<b>2,749</b>	<b>3,416</b>

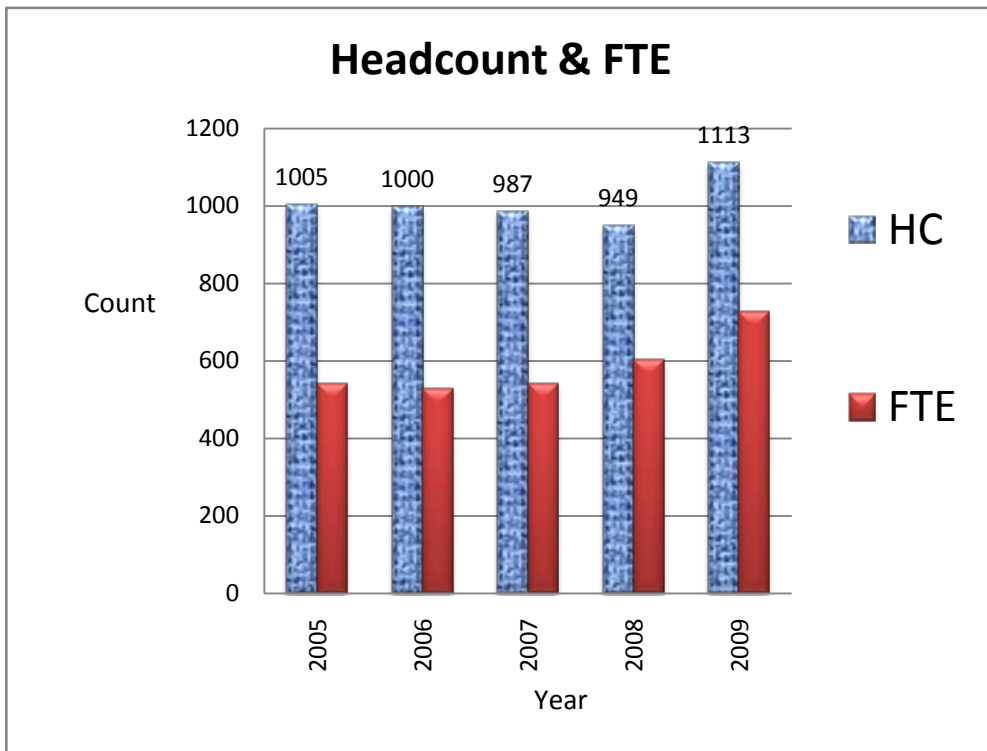
**HISTORY OF ENROLLMENT  
GIBSON COUNTY  
FOR  
FALL SEMESTERS 2005 - 2009**

Gibson Co. Center/ Peabody H.S.	H/C	FTE	Avg. Load per	Race			Avg. Age
				Black	White	Other	
2005	343	123.3	5.39	74	265	4	29
2006	371	129.1	5.2	71	294	6	28
2007	278	99.4	5.4	44	222	12	27
2008	240	137.93	8.6	46	185	9	27
2009	280	187.73	10.1	79	194	28	27



**HISTORY OF ENROLLMENT  
TIPTON COUNTY  
FOR  
FALL SEMESTERS 2005 - 2009**

Tipton Co.	H/C	FTE	Avg. Load per Student	Race			Avg. Age	Gender		Avg. Age Male	Avg. Age Female
				Black	White	Other		Male	Female		
2005	1005	541.9	8.1	217	768	29	27	256	749	Unavailable	
2006	1000	528.1	7.9	223	752	25	27	233	767	Unavailable	
2007	987	541.67	8.23	219	744	24	27	242	987	Unavailable	
2008	949	604.9	9.5	207	717	25	27	241	708	Unavailable	
2009	1113	728.47	9.82	303	786	23	27	299	814	24.9	28.6



Learning Resources Centers/Libraries  
2 Year Comparison

DSCC maintains Learning Resource Centers at the Dyersburg campus, the Jimmy Naifeh Center in Tipton Co. and the Gibson County Center in Trenton

Resources	Available to Students/Public		Number of Usages	
	2008-2009	2009-2010	2008-2009	2009-2010
Book Volumes	39,584	40,693	1,348	1,229
Computers				
Dyersburg Campus	211	211		
Gibson County	34	34		
Jimmy Naifeh Center	51	51		
Community Users			406	568
Electronic Searches				
Biography Resource Center			1,249	1,403
NetLibrary E Books			7,543	9,226
Encyclopedias			1,126	1,422
Wilson Web			9,370	64,597
Opposing Viewpoints			1,427	1,597
Miscellaneous Databases			7,728	13,691
Academic Universe			675	1,241
Access Science-discontinued				
Facts on file			6,489	6,676
Facts.com			1,639	3,970
MagillOnLiterature			811	1,212
Oxford English Dict			304	295
Databases Available	83	85		
Information Skills Sessions			136 Sessions 2256 Students	243 Sessions 4991 Students
Number of people using the LRC				
Dyersburg Campus			115,003	152,221
Jimmy Naifeh Center			25,813	36,001
Tennessee Electronic Library INFOTRAC			114,022	236,082

**Computer Facilities  
Fall 2009**

Campus	Computers Available for Students	
	2008	2009
<b>Dyersburg</b>	<b>505</b>	<b>531</b>
A&P Lab (Biology Lab)	4	4
AOS Lab	20	20
Baptist Collegiate Ministry	5	5
Bekaert Lab	26	26
Biology Lab	4	4
Career Center - Campus Activities Building	3	3
Chemistry Lab Annex-Glover G217	4	5
CIT Lab-LRC 151	38	38
Continuing Education	8	8
Cyber Café	2	2
Glover 203 Lab	25	25
Gym Study Room		4
LRC (library)	72	87
LRC Allied Health Lab	6	6
LRC Information Resource Lab	33	31
LRC Information Skills Lab	39	39
LRC Open Lab	42	42
LRC study rooms	6	6
LRC Vue Testing	7	7
Math Building	24	24
Math Lab	31	60
Music Lab	2	2
Nursing Lab - G209	4	6
Nursing Lab - G211A	2	4
One Stop Lab	10	10
Physics Lab	9	8
R&D Lab	15	15
Sim Man laptop for Nursing	1	1
Student Success Center	6	2
Student Support Services	15	6
Testing - Student Center	15	15
Wellness Lab	1	15
Writing Lab		1
Master Classrooms	26	27
<b>Gibson County in Trenton</b>	<b>42</b>	<b>43</b>
A&P Lab (Biology Lab)	4	4
Computer Lab	21	21
LRC (library)	14	18
Master Classroom	3	4
<b>Jimmy Naifeh Center</b>	<b>193</b>	<b>175</b>
A Lab	25	25
A&P Lab (Biology Lab)	5	5
B Lab	25	25
Biology Lab (Actually Physics Lab)	13	13
Chemistry Lab	1	1
CIT Lab (Currently Building B Open Lab)	20	21
LRC (library)	70	70
LRC Online Testing	3	3
Master advising student computers	2	2



Networking Lab	9	9
R&D Lab		
Science Labs (2)	1	1
Sim Man computer for Nursing	19	20
Master classroom		
<b>Obion Co./Union City Industrial Training Center</b>	<b>32</b>	<b>0</b>
Amatrol Stations	4	
Lab	20	
LRC	3	
PLC stations	4	
Master Classroom	1	
<b>TOTAL COMPUTERS</b>	<b>772</b>	<b>749</b>
<b>TOTAL MASTER CLASSROOMS &amp; LABS</b>	<b>48</b>	<b>51</b>
Dyersburg campus	26	27
Gibson County Campus	3	4
Tipton County Campus	19	20
Obion County Center		0

Master Classrooms are equipped with:

- ▶ Overhead projector and VCR
- ▶ Computer with DVD player connected to the internet
- ▶ Amplifier with speakers
- ▶ 10' x 10' screen
- ▶ White boards
- ▶ Remote mouse

**JOB PLACEMENT & TRANSFER REPORT  
2005 - 2009**

DEGREE PROGRAMS	2005-06			2006-07			2007-08			2008-09		
	# To Be Placed	% Placed	# To Be Placed	% Placed	# To Be Placed	% Placed	# To Be Placed	% Placed	# To Be Placed	% Placed		
Bus. Related Tech.	26	69%	24	71%	22	86%	12	75%				
Comm. & Info. Tech.	9	67%	2	100%	2	100%	1	100%				
Early Childhood Educ			5	80%	5	100%	4	75%				
General Technology			1	100%	1	100%	1	100%				
Health Info Tech.	5	60%	10	70%	9	78%	10	90%				
Justice Services	6	83%	2	100%	2	100%	4	75%				
MST			1	100%	1	100%						
Nursing	58	100%	40	100%	39	100%	37	100%				
Teaching			0				1	100%				
<b>Certificate Programs</b>												
Comp Sys Op& Maint												
Early Childhood Educ	3	100%	6	100%	6	100%						
Industrial Mechanisms							2	100%				
Medical Coding	5	40%	10	50%	8	63%	3	100%				
Medical Transcription	2	0%	0	0%	1	100%	3	100%				
MST			2	100%	2	100%						
Surgical Technology	10	80%	10	30%	9	33%						
<b>Totals</b>	<b>124</b>	<b>89%</b>	<b>113</b>	<b>92%</b>	<b>107</b>	<b>93%</b>	<b>78</b>	<b>92%</b>				
	<b># of Degrees</b>	<b>% Career or Transfer</b>	<b># of Degrees</b>	<b>% Career or Transfer</b>	<b># of Degrees</b>	<b>% Career or Transfer</b>	<b># of Degrees</b>	<b>% Career or Transfer</b>				
<b>Ttl Career Graduates</b>	125	53%	134	53%	119	52%	143	58%				
<b>Ttl Transfer Graduates</b>	110	47%	118	47%	112	48%	104	42%				
<b>May Graduates</b>	194		218		170		219	89%				
<b>August Graduates</b>	41		34		28		28	11%				

## THEC Persistence to Graduation at Two-Year Institutions

Two-Year Institutions	2001-2007			2002-2008			2003-2009		
	Black	White	Total	Black	White	Total	Black	White	Total
Chattanooga State Technical Community College	12.0%	31.1%	27.6%	11.1%	27.0%	23.6%	12.6%	28.7%	25.5%
Cleveland State Community College	28.6%	27.7%	28.6%	21.7%	33.3%	32.7%	12.5%	32.1%	31.0%
Columbia State Community College	18.4%	43.9%	41.4%	30.9%	39.9%	38.7%	32.7%	45.7%	43.6%
Dyersburg State Community College	9.5%	33.3%	29.3%	11.2%	31.8%	27.9%	13.6%	28.0%	25.0%
Jackson State Community College	15.7%	35.7%	30.7%	19.4%	36.8%	32.3%	7.9%	34.5%	28.5%
Motlow State Community College	28.9%	43.1%	42.0%	21.7%	40.4%	38.9%	17.0%	43.4%	40.7%
Nashville State Technical Institute	14.4%	28.3%	23.2%	16.3%	27.2%	23.5%	14.2%	30.4%	25.0%
Northeast State Technical Community College	16.7%	36.1%	35.2%	0.0%	34.9%	34.7%	18.8%	36.0%	35.4%
Pellissippi State Technical Community College	7.9%	38.2%	35.2%	16.3%	35.1%	33.3%	12.1%	39.3%	37.4%
Roane State Community College	10.7%	38.3%	37.3%	36.4%	41.7%	42.0%	30.8%	41.1%	40.0%
Shelby State Community College	12.1%	22.4%	15.4%	13.5%	27.1%	18.3%	10.4%	24.0%	15.0%
Volunteer State Community College	15.5%	28.6%	27.4%	18.7%	29.0%	27.8%	15.7%	32.0%	31.2%
Walters State Community College	30.6%	38.9%	38.5%	16.3%	35.2%	34.9%	20.0%	36.3%	36.0%
<b>Overall Averages</b>	13.9%	35.3%	31.2%	15.4%	34.4%	31.0%	12.7%	35.4%	31.1%

\* In the academic year 2000-2001, State Technical Memphis merged with Shelby State Community College to become Southwest Tennessee Community College

**DEGREES/CERTIFICATES CONFERRED**  
**Spring 2005 - Spring 2009**  
**By Major and Concentration**

Major/Concentration	2004-05	2005-06	2006-07	2007-08	2008-09
Allied Health	8	13	8	10	6
Biology/Forestry	1	5	3		1
Business Transfer	24	19	15	18	17
Chemistry				1	
Computer Science	2			1	1
Criminal Justice	6	6	8	2	2
Elementary Education*	17	20	33	21	6
Secondary Education	12	16	17	13	16
English	7	3	4	1	3
General Studies	5	8	6	4	22
General Technology				2	1
Health, P.E. & Recreation	1		3		5
History	3	2	2	3	1
Mathematics					
Medical Oriented	1	1	2		1
Music	3		1	3	1
Pre-Engineering					
Pre-Nursing	2	3	3	2	3
Pre-Veterinary Medicine					
Psychology	8	7	7	7	6
Regents - General Studies					
Social Sciences	3	1			
Sociology/Social Work	7	2	6	2	7
Teaching, K-6*				3	7
<b>University Parallel Total</b>	<b>110</b>	<b>106</b>	<b>118</b>	<b>93</b>	<b>106</b>
<b>Regents A.S. Concentration</b>					

Elementary Ed & Teaching K-6 combined in 2007

**DEGREES/CERTIFICATES CONFERRED**

**Spring 2005 - Spring 2009**

**By Major and Concentration**

<b>Major/Concentration</b>	<b>2004-05</b>	<b>2005-06</b>	<b>2006-07</b>	<b>2007-08</b>	<b>2008-09</b>
Accounting Technology	10	3	2	4	2
Administrative Office Support	11	7	12	8	11
Business Administration	13	16	9	7	6
Management	1		3	1	3
Management Inf. Systems	5				
Marketing					
<b>Business Total</b>	<b>40</b>	<b>26</b>	<b>26</b>	<b>20</b>	<b>22</b>
<b>Communications &amp; Info. Tech</b>	<b>12</b>	<b>14</b>	<b>6</b>	<b>3</b>	<b>5</b>
<b>Early Childhood Education</b>	<b>1</b>	<b>7</b>	<b>16</b>	<b>4</b>	
<b>Health Information Tech.</b>	<b>8</b>	<b>9</b>	<b>11</b>	<b>13</b>	<b>15</b>
Comp. Sys. Oper. & Maint. Tech. Cert.	2	2			2
Early Childhood Tech. Cert.	2	1			
Medical Coding Tech. Cert.	11	7	12	5	8
Medical Transcription Aca.	4	4	1		4
Surg. Tech. Aca. Cert.	11	8	12		
Welding Technical Cert.					
<b>Certificates Total</b>	<b>30</b>	<b>22</b>	<b>25</b>	<b>5</b>	<b>14</b>
Industrial Electronics			11	2	
Manufacturing Systems Tech.		1	1		
<b>Indust. Elec. Tech. Total</b>			<b>12</b>	<b>2</b>	
<b>Justice Services Total</b>	<b>7</b>	<b>7</b>	<b>4</b>	<b>4</b>	<b>5</b>
<b>Nursing Total</b>	<b>57</b>	<b>61</b>	<b>42</b>	<b>46</b>	<b>72</b>
<b>Regents Info. Tech. - Prof Studies</b>					
<b>CAREER DEGREE TOTAL</b>	<b>155</b>	<b>146</b>	<b>142</b>	<b>97</b>	<b>133</b>
<b>DSCC TOTAL</b>	<b>265</b>	<b>252</b>	<b>260</b>	<b>190</b>	<b>239</b>

**RETENTION FROM FALL TO SPRING SEMESTERS  
FOR SELECTED STUDENT GROUPS  
From Fall 2004 to Spring 2008**

<b>Group</b>	<b>% Persisting 04F - 05S</b>	<b>Grade Mean</b>	<b>% Persisting 05F - 06S</b>	<b>Grade Mean</b>	<b>% Persisting 06F - 07S</b>	<b>Grade Mean</b>	<b>% Persisting 07F - 08S</b>	<b>Grade Mean</b>
All Students	66.9	2.58	69.6%	2.67	70.3%	2.46	75.1%	2.75
R/D Freshmen	68.4	2.35	80.7%	2.44	68.2%	1.94	68.9%	2.59
First Time Freshmen-College Level	78.1	2.63	70.8%	1.95	70.7%	1.91	*	*
Continuing Freshmen	67.2	2.37	70.8%	2.51	69.9%	2.16	70.3%	2.74
Sophomores	72.4	2.81	73.1%	2.80	72.2%	2.56	72.8%	3.00
Non-Degree Seeking	37.6	3.11	50.4%	3.11	66.7%	3.09	69.4%	3.31
Degree Seeking	70.0	2.55	71.7%	2.65	71.0%	2.34	71.6%	2.81
Black Degree Seeking	65.8	2.25	71.0%	2.39	66.9%	2.04	73.1%	2.51
First Time Freshmen - White	71.5	2.51	71.4%	2.61	73.0%	1.97	71.2%	2.73
First Time Freshmen - Black	65.5	2.10	67.5%	2.52	61.5%	1.66	78.6%	2.25
First Time Freshmen - Male	66.8	2.18	65.4%	2.28	70.9%	1.66	69.0%	2.35
First Time Freshmen - Female	72.3	2.58	73.9%	2.77	70.7%	2.04	74.3%	2.75
College 101 Students	71.4	2.53	72.8%	2.81	71.6%	1.99	75.7%	2.66
Student Support Services Students	71.0	2.56	78.5%	2.62	83.1%	2.32	*	*
Need-Based Financial Aid Students	71.1	2.57	73.3%	2.72	73.2%	2.29	70.2%	2.89
*Not available								

**RETENTION FROM FALL TO SPRING SEMESTERS  
FOR SELECTED STUDENT GROUPS  
Fall 2008 - Spring 2009**

Group	Fall 2008 - Spring 2009			
	Enrolled 2008F	Returning	% Persisting	AVG HIED GPA
All Students	2683	1965	73.2%	2.47
R/D Freshmen	548	409	74.6%	1.73
First Time Freshmen-College Level	674	508	75.4%	1.84
Other Freshmen	653	475	72.7%	2.22
Sophomores	721	554	76.8%	2.79
SP Classification	635	428	67.4%	3.01
Non-Degree Seeking	601	408	67.9%	3.05
Degree Seeking	2082	1557	74.8%	2.3
Black Degree Seeking	428	308	72.0%	1.89
First Time Freshmen - White	511	377	73.8%	1.84
First Time Freshmen - Black	129	102	79.1%	1.52
First Time Freshmen - Male	226	160	70.8%	1.64
First Time Freshmen - Female	448	348	77.7%	1.94
College 101 Students	196	144	73.5%	2.65
Student Support Services Students	155	133	85.8%	2.54
Need-Based Financial Aid Students	1292	1007	77.9%	2.26

**FALL TO FALL RETENTION  
FOR SELECTED STUDENT GROUPS  
From Fall 2004 to Fall 2009**

<b>Group</b>	<b>% Persisting 04F - 05F</b>	<b>% Persisting 05F - 06F</b>	<b>% Persisting 06F - 07F</b>	<b>% Persisting 07F - 08F</b>	<b>% Persisting 08F - 09F</b>
All Students	50.1	40.5	39.6	39.6	42.90
R/D Freshmen	41.8	43.9	45.3	45.3	52.00
First Time Freshmen-College	57.1	48.4	45.7	45.7	53.20
Continuing Freshmen	44.9	46.7	49.3	49.3	49.20
Sophomores	36.9	38.1	37.3	37.3	44.50
Non-Degree Seeking	22.7	11.5	22.8	22.8	24.90
Degree Seeking	53.7	43.7	43.0	43.0	48.40
Black Degree Seeking	52.4	41.6	41.3	41.3	48.50
College 101 Students	46.6	49.8	47.7	47.7	45.69
Student Support Services Student	44.9	48.5	57.1	57.1	60.00
Need-Based Financial Aid Student	42.4	43.8	45.4	45.4	50.90
First Time Freshmen - White	46.0	50.3	47.5	47.5	47.50
First Time Freshmen - Black	37.9	41.2	39.4	39.4	55.90
First Time Freshmen - Male	37.0	43.3	44.4	44.4	42.00
First Time Freshmen - Female	48.2	51.4	46.4	46.4	57.40
All Male Students	33.0	33.9	32.1	31.8	39.40
Degree-Seeking Males	35.9	39.1	38.4	38.4	33.04



**FACULTY EVALUATION INSTRUMENT MEAN ITEM SCORES - BY DIVISION 2009**  
**FULL & PART TIME FACULTY**

Survey Item	Arts & Sciences	Business & Technology	Nursing-Allied Health
1. The instructor clearly explained the course syllabus at the beginning of the semester	3.54	3.11	3.37
2. The instructor provided students with office hours, a telephone number, and /or an email address	3.58	3.45	3.55
3. The instructor was enthusiastic when presenting course material	3.46	3.11	3.40
4. The instructor seemed to be interested in teaching.	3.57	3.18	3.43
5. The instructor used a variety of teaching methods to help students learn.	3.15	2.59	3.22
6. The instructor seemed to be concerned with whether the students learned the material.	3.33	2.85	3.35
7. The instructor treated students fairly.	3.52	3.21	3.48
8. The instructor encouraged students to express opinions.	3.36	3.02	3.35
9. The instructor appeared receptive to new ideas.	3.20	2.85	3.30
10. The instructor presented the material in a clear and organized manner.	3.53	2.80	3.21
11. The instructor demonstrated a thorough knowledge of the course.	3.53	3.17	3.45
12. The instructor returned assignments within a two-week period.	3.34	3.09	3.37
13. In general, the instructor was an effective teacher.	3.42	2.91	3.35
14. Classes began and ended on time.	3.49	3.18	3.42
15. Class activities were related to the course objectives	3.54	3.25	3.46
16. I had an opportunity to ask questions.	3.59	3.37	3.54
17. I was generally attentive in class.	3.44	3.31	3.62
18. I was interested in learning the course material.	3.27	3.20	3.66
19. I felt this course challenged me to think critically.	3.31	3.04	3.60
20. I know more or have better skills in this area because of this course.	3.29	3.01	3.55
21. I would recommend this instructor to a friend.	3.33	2.90	3.42
<b>OVERALL AVERAGE</b>	<b>3.42</b>	<b>3.08</b>	<b>3.43</b>

SA...Strongly Agree...4

A...Agree...3

N...Neutral...2

D...Disagree...1

SD...Strongly Disagree...0

**Per Capita Income & Poverty Level**

County	Per Capita Income 1999	State Rank 1999	% Below Poverty Level 2000	% Below Poverty Level 2008	Difference in Poverty Levels
Crockett	\$14,600	38	16.9%	18.2%	1.3%
Dyer	\$16,451	26	15.9%	17.7%	1.8%
Gibson	\$16,320	30	12.8%	17.1%	4.3%
Lake	\$10,794	95	23.6%	37.8%	14.2%
Lauderdale	\$13,682	67	19.2%	23.6%	4.4%
Obion	\$17,409	19	13.3%	16.7%	3.4%
Tipton	\$17,952	58	12.1%	13.7%	1.6%
DSCC Service Area*	\$15,315		16.3%*	20.7%*	4.4%
TN	\$19,393		13.5%	15.5%	2.0%
US	\$21,690		12.5%	13.2%	0.7%

Source: Census 2000; Bureau of Economic Analysis (BEA)

♦Lake County, ranked 95th, has the lowest per capita income in Tennessee

\*Average of 7 Counties

**Population 2000**

**Percent Change Since 1990**

County	Population		% Change	Population	
	1990	2000		2009 Estimate	% Change
Crockett	13,378	14,532	8.6%	14,492	-0.3%
Dyer	34,854	37,279	6.9%	37,811	1.4%
Gibson	46	48,152	4.0%	49,468	2.7%
Lake	7,129	7,954	11.6%	7,303	-8.2%
Lauderdale	23,491	27,101	15.4%	26,471	-2.3%
Obion	31,717	32,450	2.3%	31,431	-3.1%
Tipton	37,568	51,271	36.5%	59,495	16.0%
DSCC Service Area*	194,452	218,739	12.5%	32,353	0.9%
<b>TN</b>	<b>4,877,185</b>	<b>5,689,283</b>	<b>16.6%</b>	<b>6,296,254</b>	<b>10.7%</b>
US	248,709,873	273,643,274	10.0%	307,006,550	9.1%

Source: Census 2000

\*Average of 7 Counties

**Median Family Income 2000/2008**

County	Median Family Income		
	2000	2008	Percent Change
Crockett	\$36,713	\$41,121	11%
Dyer	\$39,848	\$39,484	-1%
Gibson	\$39,318	\$36,782	-7%
Lake	\$30,339	\$26,739	-13%
Lauderdale	\$36,841	\$32,670	-13%
Obion	\$40,533	\$41,121	1%
Tipton	\$46,807	\$47,850	2%
DSCC Service Area*	\$38,628	\$37,967	-2%
TN	\$49,600	\$43,610	-14%
US	\$50,045	\$52,089	4%

Source: Census 2000

\*Average of 7 Counties

**FULL-TIME INSTRUCTIONAL FACULTY 2004-2009\***  
**BY RANK**

Rank	2004-05		2005-06		2006-07		2007-08		2008-09	
	#	%	#	%	#	%	#	%	#	%
Professor	8	13%	10	17%	10	17%	11	19%	11	19%
Associate Professor	27	45%	26	44%	25	43%	22	38%	19	33%
Assistant Professor	2	3%	7	12%	8	14%	6	10%	8	14%
Instructor	22	36%	14	24%	12	21%	18	31%	17	29%
Unfilled positions	2	3%	2	3%	3	5%	1	2%	3	5%
<b>Total</b>	61	100%	59	100%	58	100%	58	100%	58	100%

\*Includes restricted

**ACADEMIC PROFILE OF INSTRUCTIONAL FACULTY\***

Rank	2004-05		2005-06		2006-07		2007-08		2008-09	
	#	%	#	%	#	%	#	%	#	%
PhD., Ed. D.	14	24%	15	26%	16	29%	18	31%	15	27%
MS	29	49%	23	40%	27	49%	29	50%	30	55%
MS + 30	4	7%	3	5%	3	5%	3	5%	4	7%
MS + 45	3	5%	3	5%	2	4%	2	3%	2	4%
BS	8	13%	11	20%	6	11%	5	9%	3	6%
AS	1	2%	2	4%	1	2%	1	2%	1	1%
<b>Total</b>	59	100%	57	100%	55	100%	58	100%	55	100%

\*Includes restricted

**AVERAGE ACADEMIC YEAR SALARIES OF FACULTY\***

Rank	2005	2006	2007	2008	2009
Professor	\$56,868	\$58,005	\$54,522	\$56,546	\$57,492
Associate Professor	\$49,194	\$48,784	\$51,910	\$47,828	\$51,746
Assistant Professor	\$45,286	\$45,241	\$40,824	\$39,006	\$41,006
Instructor	\$35,877	\$36,991	\$42,158	\$43,211	\$41,114

\*Includes restricted

**FACULTY, SCH, FTE, COURSE SECTIONS, & AVERAGE CLASS SIZE**

Fall Semesters 2004-2009

Semester	Number of Faculty		% SCH Taught		FTE Faculty		Ave. Class Size	SCH Taught		Course Sections Taught	
	FT	PT	FT	PT	FT	PT		FT	PT	FT	PT
Fall 2004	55	120	63%	37%	55	50	20	15,324	10,342	319	257
Fall 2005	56	118	58%	42%	57	52	19	14,491	10,671	302	234
Fall 2006	54	110	59%	41%	54	38	19	13,995	9,773	295	206
Fall 2007	57	136	60%	40%	57	43	20	13,843	9,235	289	197
Fall 2008	56	121	66%	34%	56	41	20	15,061	11,243	314	239
Fall 2009	Information not available at this time										

**STUDENT CREDIT HOUR PRODUCTION**

BY DEPARTMENT

Fall Semesters 2005-2009

Department	Fall 2005		Fall 2006		Fall 2007		Fall 2008		Fall 2009	
	FT	PT	FT	PT	FT	PT	FT	PT	FT	PT
Arts & Sciences	7,900	5,063	7,910	5,254	6,707	4,823	7,378	5,703	Information not available at this time	
Business & Technology	3,449	1,357	2,972	1,257	3,140	1,437	2,964	1,773		
Nursing	1,312	753	1,136	607	1,770	581	2,332	1,126		
R & D	1,830	3,498	1,977	2,655	2,226	2,397	2,387	2,641		
<b>Total</b>	14,491	10,671	13,995	9,773	13,843	9,238	15,061	11,243		

## SUMMARY OF STUDENT FINANCIAL AID AWARDED

Student Financial Aid: Fall 2003 - Fall 2007										
Type	Fall 2004		Fall 2005		Fall 2006		Fall 2007		Fall 2008	
	# of Awards	\$ Amount	# of Awards	\$ Amount	# of Awards	\$ Amount	# of Awards	\$ Amount	# of Awards	\$ Amount
Federal	1,888	2,457,503	1,898	2,498,334	1,737	2,300,166	1,750	2,458,860	2,054	3,360,568
State	690	415,385	564	393,573	569	431,601	672	535,414	610	572,782
Institutional	542	269,579	351	250,190	307	210,749	567	326,885	658	370,752
Private	174	109,019	155	95,967	138	79,299	152	101,314	88	76,502
<b>Total</b>	<b>3,294</b>	<b>3,251,486</b>	<b>2,968</b>	<b>3,238,064</b>	<b>2,751</b>	<b>3,021,815</b>	<b>3,141</b>	<b>3,422,472</b>	<b>3,410</b>	<b>4,380,604</b>
Unduplicated # of Students Receiving Financial Aid for	1,679		1,525		1,443		1,603		1,756	
	68.00%		62.00%		56.00%		62.00%		61.00%	

It is understood that duplicative awards will be reflected in this summary.

- ◆ 64% of DSCC students receive some form of financial aid. (Source: DSCC Institutional Records)
- ◆ In 2003, 80% of DSCC full-time freshmen received financial aid while 58% of TBR community colleges full-time freshmen received financial aid. (source:TBR)

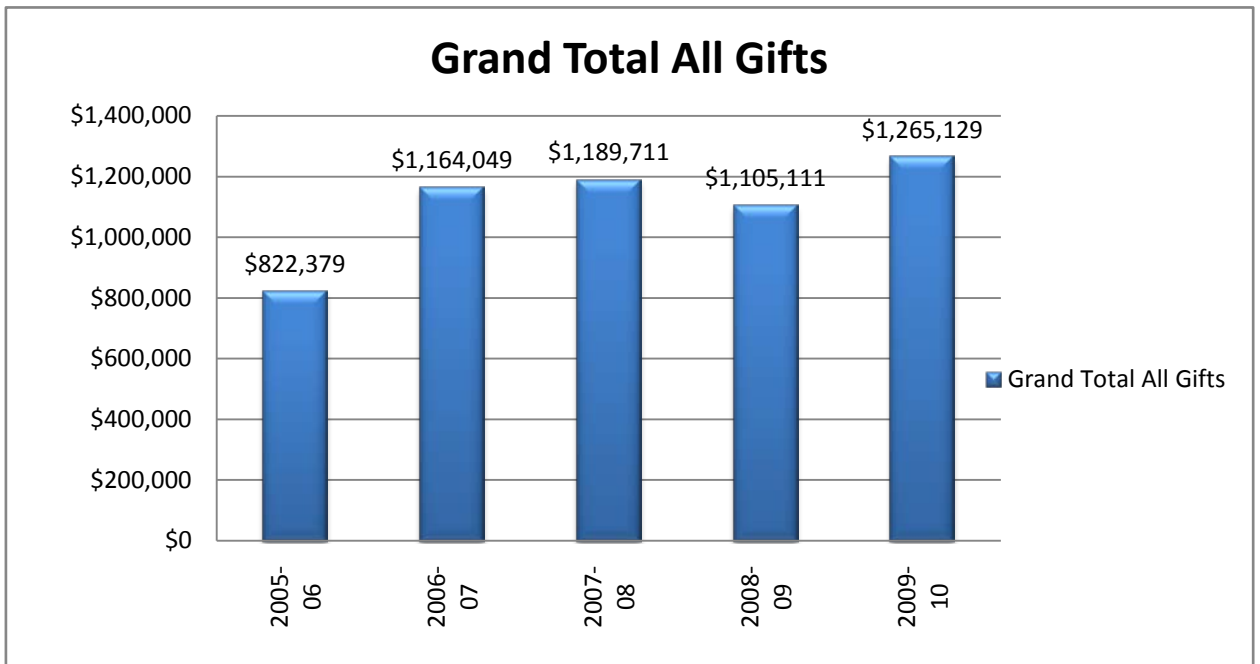
**DYERSBURG STATE COMMUNITY COLLEGE  
TABLE OF FUNDRAISING AND ENROLLMENT BY COUNTY**

GIVING						Enrollment				
COUNTY	2005-06	2006-07	2007-08	2008-09	2009-10	2005	2006	2007	2008	2009
Crockett	\$ 635	\$ 460	\$ 725	\$ 1,150	\$ 725	41	48	41	67	80
Dyer	\$ 308,963	\$ 457,408	\$ 416,852	\$ 406,793	\$ 319,190	666	676	683	759	864
Gibson	\$ 38,366	\$ 40,094	\$ 43,837	\$ 40,201	\$ 37,239	248	277	244	289	325
Lake	\$ 2,775	\$ 8,185	\$ 9,814	\$ 8,325	\$ 5,365	78	84	62	67	82
Lauderdale	\$ 94,096	\$ 81,046	\$ 82,273	\$ 80,947	\$ 88,158	309	308	290	240	336
Obion	\$ 41,975	\$ 30,550	\$ 47,372	\$ 26,324	\$ 29,674	219	227	226	211	264
Tipton	\$ 336,136	\$ 217,842	\$ 192,897	\$ 212,172	\$ 260,798	643	729	789	772	1016
<b>Seven County Total</b>	<b>\$ 822,946</b>	<b>\$ 835,585</b>	<b>\$ 793,770</b>	<b>\$ 775,912</b>	<b>\$ 741,149</b>	<b>2,204</b>	<b>2,349</b>	<b>2,335</b>	<b>2,405</b>	<b>2,967</b>
Missouri	\$ 2,393	\$ 5,676	\$ 3,070	\$ 5,922	\$ 6,346	15		15	11	19
Other	\$ 196,435	\$ 154,306	\$ 193,798	\$ 194,641	\$ 337,810	238	237	218	333	430
<b>Total Community</b>	<b>\$ 1,021,774</b>	<b>\$ 995,567</b>	<b>\$ 990,638</b>	<b>\$ 976,475</b>	<b>\$ 1,085,305</b>	<b>2,457</b>	<b>2,586</b>	<b>2,568</b>	<b>2,749</b>	<b>3,416</b>
Faculty/Staff	\$ 23,243	\$ 23,152	\$ 30,471	\$ 30,752	\$ 31,200					
Grand Total	\$ 1,045,017	\$ 1,018,719	\$ 1,021,109	\$ 1,007,226	\$ 1,116,506					

\*\*Giving information is as of

**DSCC FOUNDATION AND ANNUAL FUND  
2006 - 2010**

	2005-06	2006-07	2007-08	2008-09	2009-10
Total Cash and Marketable Securities from gifts	\$742,509	\$1,106,801	\$1,135,259	\$1,093,011	\$1,201,395
Total In-Kind Gifts	\$79,870	\$57,248	\$54,452	\$12,100	\$63,734
<b>Grand Total All Gifts</b>	<b>\$822,379</b>	<b>\$1,164,049</b>	<b>\$1,189,711</b>	<b>\$1,105,111</b>	<b>\$1,265,129</b>



## Student Loan Default Rates

### Tennessee Community Colleges 2003 - 2007

Community College	FY 2003 %	FY 2004 %	FY 2005 %	FY 2006 %	FY 2007 %
Chattanooga State Tech. Community College	14.2	12.8	12.2	12.9	15.2
Cleveland State Community College	7.5	11.4	9.9	836.0	0
Columbia State Community College	6.1	4.9	6.9	8.9	13.5
Dyersburg State Community College	10.1	11.5	12.2	10.3	17.7
Jackson State Community College	0.0	0.0	0.0	0.0	0
Motlow State Community College	7.9	9.1	8.3	5.9	8.9
Northeast State Technical Community College	10.6	10.7	9.3	8.0	15.7
Pellissippi State Tech. Community College	13.4	11.4	13.6	10.6	13.9
Roane State Community College	9.4	11.0	9.2	7.9	11.6
Southwest Tennessee Community College	0.0	0.0	0.0	0.0	0
Volunteer State Community College	8.2	9.6	8.1	9.1	10.3
Walters State Community College	11.6	12.1	9.2	12.9	11.2
Tennessee	5.6	6.4	5.9	6.1	8.4
National	4.5	5.1	4.6	5.2	6.7

Source: [www.nasfaa.org](http://www.nasfaa.org)  
[www.ed.gov](http://www.ed.gov)



**DYERSBURG STATE COMMUNITY COLLEGE  
FEDERAL GRANT PROGRAMS 2005-2010**

<b>Program</b>	<b>2005-06</b>	<b>2006-07</b>	<b>2007-08</b>	<b>2008-09</b>	<b>Total</b>
ABE (Adult Basic Education)	\$162,310	\$134,642	\$162,000	\$134,000	\$726,675
Access & Diversity			\$50,000		\$157,100
Assisi					\$85,000
AT&T Peer Tutoring				\$80,007	\$148,268
CISCO Networking Academy	\$21,700	\$23,100	\$24,000		\$68,800
Career Exploration				\$20,702	\$20,702
Community Enhancement (Dual Enrl)			\$20,000		\$20,000
Delta Regional Grant	\$73,400	\$73,400			\$146,800
Department of Transportation Grant		\$234,901			\$234,901
EMT Accelerated Summer Program				\$34,528	\$55,895
Families First (Literacy Program)	\$74,510	\$69,666			\$144,176
<i>Geier Grant</i>	\$36,000	\$36,000			\$75,600
HRSA			\$53,425	\$53,425	\$130,404
HRSA - (ARRA funds)					\$10,000
LPN to RN Fast Track	\$154,485	\$179,840	\$303,000	\$299,310	\$1,268,897
Model Sequences of Courses		\$56,120			\$56,120
NWTDD/Tennessee Arts Commission	\$2,500	\$1,800	\$2,400	\$1,800	\$9,853
Paramedic WIA Grant					\$77,916
Perkins IV (Tech Prep prior 2007)	\$97,985	\$97,985	\$105,629	\$126,049	\$533,257
Perkins IV Reserve					\$20,000
Project Web: Articulation On-line		\$18,000			\$18,000
Rural Entrepreneurial Training		\$10,000	\$10,000	\$10,000	\$30,000
SETC-Green Jobs					\$152,000
Small Business Development Grant	\$162,635	\$162,635	\$172,809	\$175,830	\$869,739
Student Support Services	\$306,350	\$306,350	\$306,350	\$322,433	\$1,587,288
TECTA (TN Early Childhood)	\$152,067	\$236,850	\$244,850	\$358,247	\$1,405,656
Tennessee Humanities Council	\$3,233	\$2,266	\$1,767	\$2,307	\$12,025
Title III					\$391,427
Unilever					\$4,000
Upward Bound	\$286,591	\$286,591	\$295,189	\$295,189	\$1,458,749
USDA Rural Business Enterprise Grant	\$30,000	\$0	\$30,000		\$60,000
Wal-Mart					\$2,000
Wildlife		\$1,951			\$1,951
Workforce Investment Development	\$3,553,975	\$3,802,302	\$4,884,492	\$3,893,467	\$29,320,274
<b>TOTALS Without WIA</b>	<b>\$5,117,741</b>	<b>\$5,734,399</b>	<b>\$6,665,911</b>	<b>\$5,807,294</b>	<b>\$26,117,435</b>
<b>GRAND TOTALS</b>	<b>\$10,235,482</b>	<b>\$11,468,798</b>	<b>\$13,331,822</b>	<b>\$11,614,588</b>	<b>\$62,628,817</b>

**Dyersburg State Community College**  
**Unaudited Statement of Net Assets**  
**June 30, 2009**

	<b>Institution</b>	<b>Component Unit</b>
<b>ASSETS</b>		
Current assets:		
Cash and cash equivalents (Notes 2, 3 and 20 )	\$ 2,580,970.75	\$ 118,921.99
Accounts, notes, and grants receivable (net) (Note 5 )	1,791,892.74	-
Pledges receivable (net) (Notes 6 )	16,481.00	-
Prepaid expenses and deferred charges	4,499.27	-
Accrued interest receivable	-	37,789.06
Total current assets	4,393,843.76	156,711.05
Noncurrent assets:		
Cash and cash equivalents (Notes 2, 3 and 20 )	3,101,963.90	1,235,395.99
Investments (Notes 4 and 20 )	59,885.70	2,891,804.28
Capital assets (net) (Note 7 )	24,112,182.30	-
Total noncurrent assets	27,274,031.90	4,127,200.27
Total assets	\$ 31,667,875.66	\$ 4,283,911.32
<b>LIABILITIES</b>		
Current liabilities:		
Accounts payable	720,025.45	-
Accrued liabilities	509,513.31	-
Due to primary government	399,600.00	-
Deferred revenue	151,224.00	-
Compensated absences (Note 9 )	166,078.85	-
Accrued interest payable	741.82	-
Long-term liabilities, current portion (Note 9 and 20 )	111,273.50	5,600.00
Deposits held in custody for others	139,749.59	-
Total current liabilities	2,198,206.52	5,600.00
Noncurrent liabilities:		
Net OPEB obligation (Note 14 )	748,218.20	-
Compensated absences (Note 9 )	528,758.76	-
Long-term liabilities (Note 20 )	-	25,914.43
Due to grantors (Note 9 )	8,697.87	-
Total noncurrent liabilities	1,285,674.83	25,914.43
Total liabilities	\$ 3,483,881.35	\$ 31,514.43
<b>NET ASSETS</b>		
Invested in capital assets, net of related debt	24,000,908.80	-
Restricted for:		
Nonexpendable:		
Scholarships and fellowships	133,441.95	2,914,682.79
Expendable:		
Scholarships and fellowships	375,376.46	856,142.47
Instructional department uses	475,599.86	-
Loans	14,256.70	-
Other	265,563.64	-
Unrestricted (Note 11 )	2,918,846.90	481,571.63
Total net assets	\$ 28,183,994.31	\$ 4,252,396.89

The notes to the financial statements are integral part of this statement.

**Dyersburg State Community College**  
**Unaudited Statement of Revenues, Expenses, and Changes in Net Assets**  
**For the Year Ended June 30, 2009**

	<b>Institution</b>	<b>Component Unit</b>
<b>REVENUES</b>		
Operating revenues:		
Student tuition and fees ( net of scholarship allowances of	\$ 2,789,383.27	\$ 3,684,424.91
Gifts and contributions	-	39,296.54
Endowment Income (per spending plan)	-	73,562.66
Governmental grants and contracts	5,571,931.48	-
Sales and services of educational departments	13,843.57	-
Bookstore	99,639.09	-
Other operating revenues	93,375.68	-
Total operating revenues	\$ 9,463,214.73	\$ 112,859.20
<b>EXPENSES</b>		
Operating Expenses		
Salaries and wages	\$ 10,077,375.79	\$ -
Benefits	3,837,974.76	-
Utilities, supplies, and other services	6,096,528.29	6,483.60
Scholarships and fellowships	2,848,635.48	-
Depreciation expense	1,096,061.54	-
Payments to or on behalf of Dyersburg State Community College	-	94,380.00
Total operating expenses	23,956,575.86	100,863.60
Operating income (loss)	\$ (14,493,361.13)	\$ 11,995.60
<b>NONOPERATING REVENUES (EXPENSES)</b>		
State appropriations	7,374,057.00	-
Gifts, including	\$ 94,380.00	-
from component unit(s) to institution.	1,070,204.97	-
Grants and contracts	4,755,954.54	-
Investment income (net of investment expense	113,357.89	51,004.32
Interest on capital asset-related debt	(8,010.55)	-
Other non-operating revenues/(expenses)	(5,928.81)	-
Net nonoperating revenues	13,299,635.04	51,004.32
Income before other revenues, expenses gains, or losses	(1,193,726.09)	62,999.92
Capital appropriations	516,709.98	-
Additions to permanent endowments	-	46,488.29
Total other revenues	516,709.98	46,488.29
Increase (decrease) in net assets	\$ (677,016.11)	\$ 109,488.21
<b>NET ASSETS</b>		
Net Assets -beginning of year	\$ 28,751,429.84	\$ 4,142,908.68
Prior period adjustment (Note 18 )	109,580.58	-
Net Assets - end of year	\$ 28,183,994.31	\$ 4,252,396.89

The notes to the financial statements are integral part of this statement.

## Payments for 7-County Area

Crockett		Fiscal Year	Fiscal Year	Dyer		Fiscal Year	Fiscal Year
City	Zip	2007-2008	2008-2009	City	Zip	2007-2008	2008-2009
Alamo	38001	\$ 27,509.56	\$ 31,068.20	Atoka	38004	\$ 365.85	\$ 1,243.60
Bells	38006	\$ 9,602.39	\$ 14,979.66	Bogota	38007	\$ 137.00	\$ 1,873.75
Crockett Mills	38021		\$ 32.75	Dyersburg	38024	\$ 1,051,141.00	\$ 1,442,745.00
Friendship	38034	\$ 30,120.00	\$ 42,297.58	Dyersburg	38025	\$ 470,103.60	\$ 401,093.50
Halls	38040	\$ 4,963.75	\$ 1,240.50	Finley	38030	\$ 30,378.70	\$ 38,127.54
Maury City	38050	\$ 3,185.00	\$ 3,627.26	Friendship	38034	\$ 6,777.25	\$ 198.00
Gadsden	38337	\$ 6,762.13	\$ 13,707.28	Halls	38040	\$ 3,154.10	\$ 1,927.95
Humboldt	38443	\$ 653.75	\$ 360.95	Lenox	38047	\$ 4,499.50	\$ 3,386.25
		\$ 82,796.58	\$ 107,314.18	Newbern	38059	\$ 234,002.40	\$ 376,381.00
				Tigrett	38070	\$ 4,941.00	\$ 4,352.75
				Trimble	38259	\$ 12,270.99	\$ 28,218.48
						\$ 1,817,771.39	\$ 2,299,547.82

Gibson County		Fiscal Year	Fiscal Year
City	Zip	2007-2008	2008-2009
Kenton	38233	\$ 20,677.41	\$ 44,606.30
Bradford	38316	\$ 24,816.03	\$ 42,952.72
Dyer	38330	\$ 56,885.17	\$ 53,929.10
Humboldt	38343	\$ 83,142.39	\$ 113,196.80
Medina	38355	\$ 4,431.32	\$ 5,460.02
Milan	38358	\$ 82,444.69	\$ 88,422.03
Rutherford	38369	\$ 14,645.45	\$ 21,329.08
Trenton	38382	\$ 124,780.50	\$ 204,832.95
Yorkville	38389		\$ 9,801.31
		\$ 411,822.96	\$ 584,530.31

Lauderdale County		Fiscal Year	Fiscal Year
City	Zip	2007-2008	2008-2009
Gadsden	38037	\$ 29,117.70	\$ 46,534.39
Halls	38040	\$ 95,551.64	\$ 111,824.00
Henning	38041	\$ 87,093.79	\$ 111,492.50
Ripley	38063	\$ 325,491.50	\$ 363,432.10
		\$ 537,254.63	\$ 633,282.99

Tipton County		Fiscal Year	Fiscal Year
City	Zip	2007-2008	2008-2009
Atoka	38004	\$ 69,855.04	\$ 85,924.93
Brighton	38011	\$ 154,512.90	\$ 223,394.70
Burlison	38015	\$ 46,367.34	\$ 66,775.98
Covington	38019	\$ 425,918.00	\$ 565,704.05
Drummonds	38023	\$ 45,307.29	\$ 77,535.23
Dyersburg	38024	\$ 22,848.96	\$ 75,756.33
Henning	38041		\$ 2,285.00
Mason	38049	\$ 42,930.92	\$ 65,835.17
Millington	38053	\$ 13,323.31	\$ 1,366.93
Munford	38058	\$ 143,920.10	\$ 146,537.50
Stanton	38069		\$ 11,214.00
		\$ 964,983.86	\$ 1,322,329.82

Lake County		Fiscal Year	Fiscal Year
City	Zip	2007-2008	2008-2009
Wynnborg	38077		\$ 3,070.88
Tiptonville	38079	\$ 68,563.12	\$ 94,487.31
Ridgely	38080	\$ 52,587.68	\$ 70,788.83
		\$ 121,150.80	\$ 168,347.02

Obion County		Fiscal Year	Fiscal Year
City	Zip	2007-2008	2008-2009
Dyersburg	38024	\$ 1,472.00	\$ 1,436.50
Hornbeak	38232	\$ 11,152.65	\$ 30,590.95
Kenton	38233	\$ 4,229.00	\$ 8,359.81
Obion	38240	\$ 38,904.12	\$ 80,089.97
Rives	38253	\$ 6,935.00	\$ 4,882.99
Samburg	38254	\$ 1,073.00	\$ 1,376.50
South Fulton	38257	\$ 24,978.94	\$ 17,517.53
Troy	38260	\$ 50,767.78	\$ 85,217.80
Union City	38261	\$ 537,480.50	\$ 227,352.00
Union City	38281	\$ 19,939.45	\$ 14,090.37
		\$ 696,932.44	\$ 470,914.42

Total Paid 7-County Area	Fiscal Year	Fiscal Year
	2008	2009
	\$ 4,632,712.66	\$ 5,586,266.56

## Salaries for 7-County Area

<u>County</u>	Calendar Year	
	<u>2008</u>	<u>2009</u>
Dyer	\$5,699,863.15	\$5,646,609.59
Crockett	\$197,036.41	\$268,897.17
Gibson	\$617,805.79	\$890,938.88
Lake	\$120,316.00	\$233,153.18
Lauderdale	\$682,916.66	\$797,478.59
Obion	\$282,715.04	\$356,285.64
Tipton	\$626,383.77	\$791,497.48
	\$1,175,290.97	\$8,984,860.53

## Workforce Investment Act

The federally funded Workforce Investment Act will offer West Tennessee job seekers and employers many services and universal access. The cornerstone of the workforce investment system is one-stop service delivery, which unifies numerous training, education and employment programs into a single, customer friendly system. The Northwest Tennessee Career Center, located in Dyersburg, and its satellites, located in Alamo, Covington, Humboldt, Ripley, Tiptonville and Union City, will empower job seekers to make career decisions through a self-help resource center or staff-assistance. Additionally, a new Youth Enrichment Site (YES) has opened in Covington, Ripley, Trenton, and Union City to focus on the specific needs of area youth. The goal of the Act is to increase employment, retention, and earning of participants, and in doing so, improve the quality of the workforce to sustain economic growth, enhance productivity and competitiveness and reduce welfare dependency. Oversight for the system is the responsibility of the Tennessee Department of Labor and Workforce Development.

Programs and services offered to youth, adults and dislocated workers include:

### Youth Year-Round Program

- Tutoring and Study Skills
- Alternative School Services
- Summer Employment Opportunities
- Work-experience, Job Shadowing and Internships
- Occupational Skill Training
- Leadership Development
- Supportive Services
- Adult Mentoring
- Follow-up Services
- Guidance and Counseling

### Adult and Dislocated Worker Services

- Assessment
- Career Counseling
- Information and Referral
- Individual Training Accounts for Occupational Skill Training
- On-the-Job Training
- Job Placement Assistance
- Job Development
- Post-Employment Follow-up

### Employer Services

- On-the-Job Training
- Incumbent Worker Training Grants
- Qualified Applicant Pool
- Assistance with Human Resource Policies and Job Descriptions

**MAPP**  
**Measures of Academic Proficiency and Progress**

**Summary of Scaled Scores**  
**To show the ability of the group taking the test**

**Dyersburg State Community College**  
**Abbreviated**

**Cohort Name:** TEST DATE: 2010-06-04T00:00:00-04:00  
**Close Date:** 06/14/2010  
**Student Level:** All

**Test Description:**  
 Abbreviated Form B  
 Paper

**Number of students tested:** 126      **Number of students included in these statistics:** 124

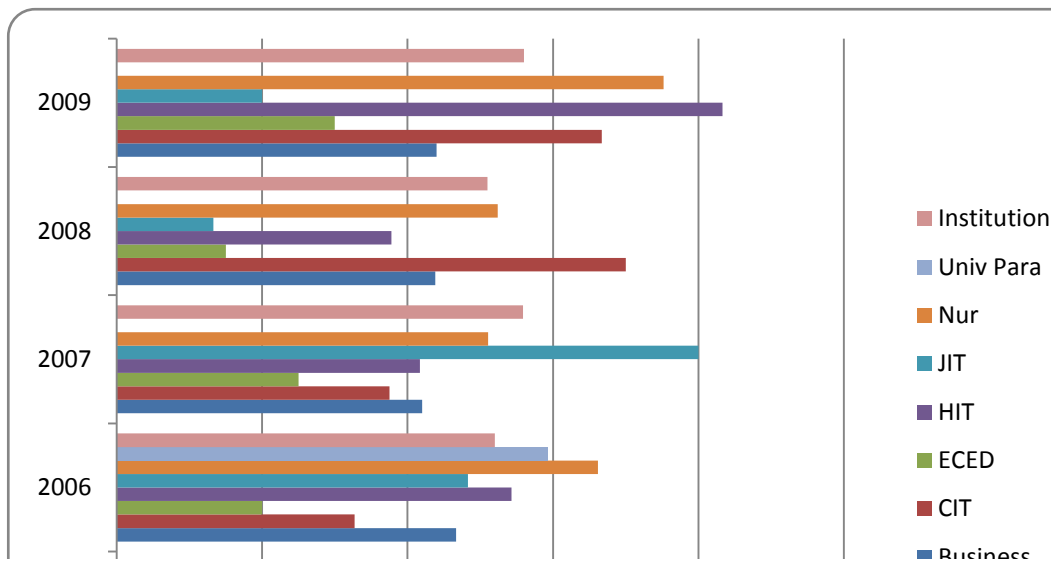
**Number of students excluded (see roster): 2**

	Possible Range	Mean Score	95% Confidence Limits* for Mean	Standard Deviation	50th Percentile	75th Percentile
<b>Total Score</b>	400 to 500	442.23	440 to 444	19.74	441	459
<b>Skills Subscores:</b>						
<b>Critical Thinking</b>	100 to 130	110.98	110 to 112	5.89	110	116
<b>Reading</b>	100 to 130	118.4	117 to 120	7.32	120	125
<b>Writing</b>	100 to 130	113.86	113 to 115	5.11	114	118
<b>Mathematics</b>	100 to 130	111.73	111 to 113	5.48	110	116
<b>Context-Based Subscores:</b>						
<b>Humanities</b>	100 to 130	115.39	114 to 117	6.59	115	121
<b>Social Sciences</b>	100 to 130	112.81	111 to 114	5.94	114	118
<b>Natural Sciences</b>	100 to 130	114.42	113 to 116	5.76	114	119

\*The confidence limits are based on the assumption that the questions contributing to each scaled score are a sample from a much larger set of possible questions that could have been used to measure those same skills. If the group of students taking the test is a sample from some larger population of students eligible to be tested, the confidence limits include both sampling of students and sampling of questions as factors that could cause the mean score to vary. The confidence limits indicate the precision of the mean score of the students actually tested, as an estimate of the "true population mean" - the mean score that would result if all the students in the population could somehow be tested with all possible questions. These confidence limits were computed by a procedure that has a 95 percent probability of producing upper and lower limits that will surround the true population mean. The population size used in the calculation of the confidence limits for the mean scores in this report is 124.

**CALIFORNIA CRITICAL THINKING SKILLS TEST  
2005-2009**

MAJOR	2005 Graduation Candidates (N=236)		2006 Graduation Candidates (N=255)		2007 Graduation (N=215)	2008 Graduation Candidates (N=155)		2009 Graduation Candidates (N=155)	
	Mean	Percentile	Mean	Percentile	Percentile	Mean	Percentile	Mean	Percentile
Bus. Related Tech.	14.58	58	14.67	52	53	14.38	54	14.40	54.10
Comm. & Info. Tech.	15.53	65	13.27	46	44	17.00	74	16.67	70.00
Early Childhood Educ	12.25	36	12.00	35	40	11.50	31	13.00	43.50
Health Info Tech.	15.60	66	15.43	62	50	13.78	49	18.33	73.50
Justice Services	15.44	64	14.83	58	78	11.33	26	12.00	34.50
Nursing	16.67	74	16.62	67	59	15.24	57	17.52	70.71
University Parallel	14.64	58	15.93	61	64	15.45	59	15.74	60.35
<b>Institution Score</b>	<b>15.19</b>	<b>63</b>	<b>15.20</b>	<b>63</b>	<b>66</b>	<b>15.10</b>	<b>61</b>	<b>15.60</b>	<b>61.00</b>





# Insight Assessment

Report Results - CCTST English - 00.1.00 - Dyersburg State CC Advancement - June 23, 2010

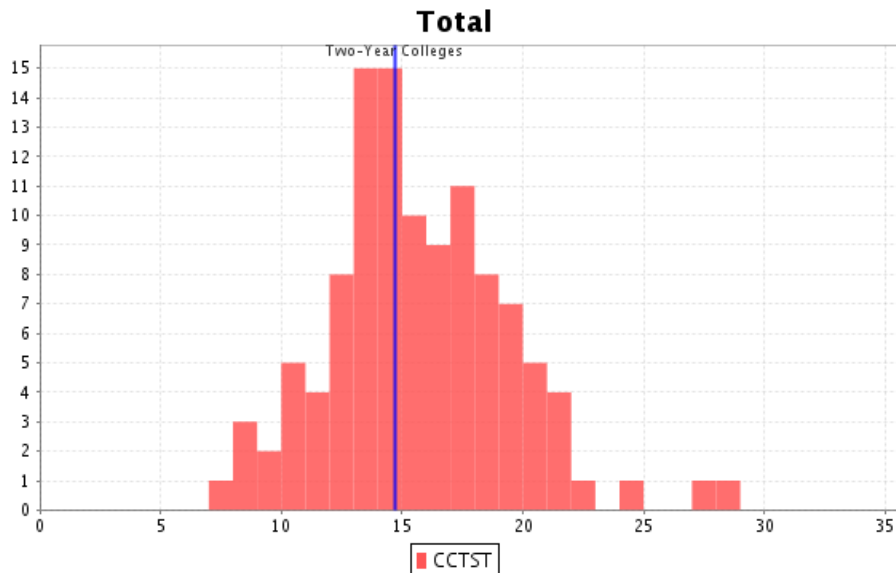
## Descriptive Statistics: CCTST

Skill Name	Group	Size	Mean	Median	Truncated Mean	Standard Deviation
Analysis And Interpretation Scale Score	1	111	4.10	4.00	4.11	1.37
Inference Scale Score	1	111	6.97	7.00	6.91	2.13
Evaluation And Explanation Scale Score	1	111	4.13	4.00	4.09	1.65
Inductive Reasoning Scale Score	1	111	9.32	9.00	9.30	2.23
Deductive Reasoning Scale Score	1	111	5.87	5.00	5.79	2.41
<b>Total</b>	1	111	15.20	15.00	15.10	3.77

Skill Name	Group	Standard Error Of Mean	Min	Max	Q1	Q3
Analysis And Interpretation Scale Score	1	0.13	1.00	7.00	3.00	5.00
Inference Scale Score	1	0.20	2.00	14.00	6.00	8.00
Evaluation And Explanation Scale Score	1	0.16	1.00	9.00	3.00	5.00
Inductive Reasoning Scale Score	1	0.21	4.00	16.00	8.00	11.00
Deductive Reasoning Scale Score	1	0.23	2.00	13.00	4.00	7.00
<b>Total</b>	1	0.36	7.00	28.00	13.00	18.00

Based on a mean score of 15.2, the average test-taker in this group scores between the 61st and 69th percentiles compared to an aggregated sample of Two-Year Colleges for Total.

Comparison to Two-Year Colleges from our Aggregated Sample for Total



# Insight Assessment

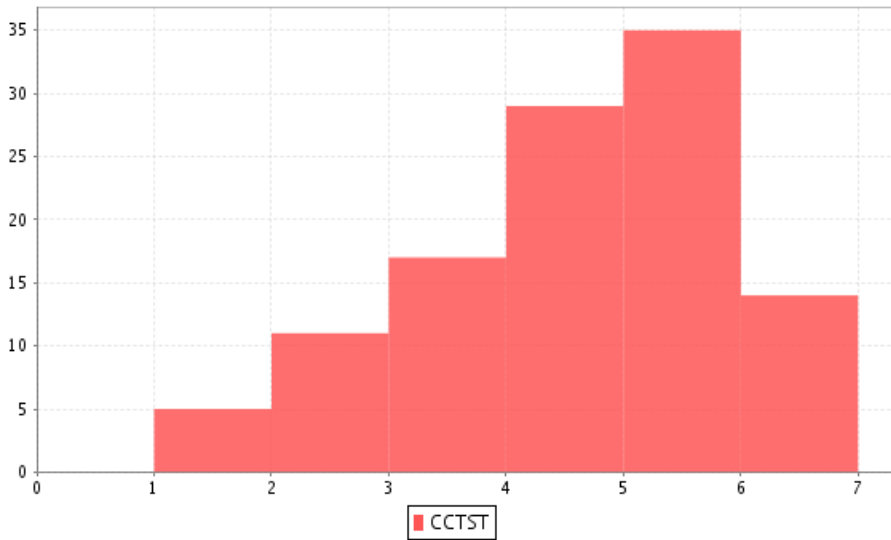
Report Results - CCTST English - 00.1.00 - Dyersburg State CC Advancement - June 23, 2010

## Descriptive Statistics: CCTST, Analysis And Interpretation Scale Score

Skill Name	Size	Mean	Median	Truncated Mean	Standard Deviation
Analysis And Interpretation Scale Score	111	4.10	4.00	4.11	1.37

Skill Name	Standard Error Of Mean	Min	Max	Q1	Q3
Analysis And Interpretation Scale Score	0.13	1.00	7.00	3.00	5.00

**Analysis And Interpretation Scale Score**

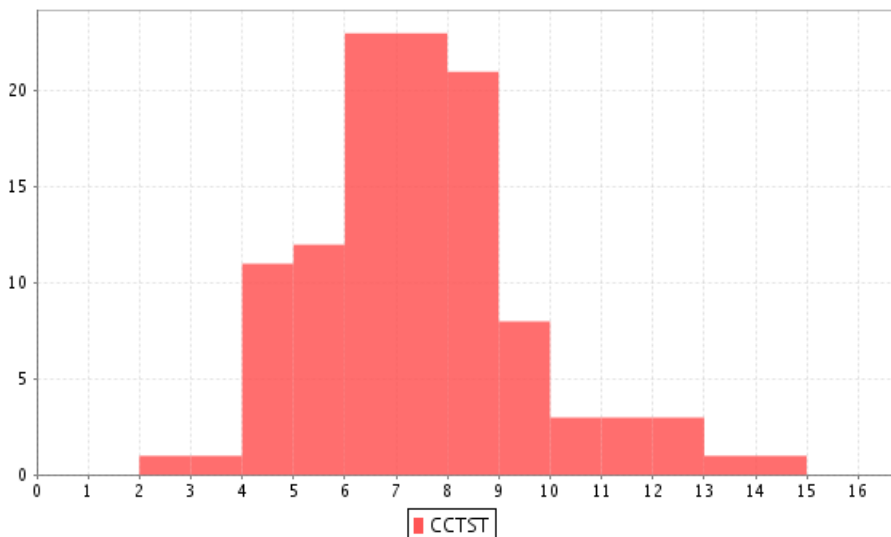


## Descriptive Statistics: CCTST, Inference Scale Score

Skill Name	Size	Mean	Median	Truncated Mean	Standard Deviation
Inference Scale Score	111	6.97	7.00	6.91	2.13

Skill Name	Standard Error Of Mean	Min	Max	Q1	Q3
Inference Scale Score	0.20	2.00	14.00	6.00	8.00

**Inference Scale Score**



# Insight Assessment

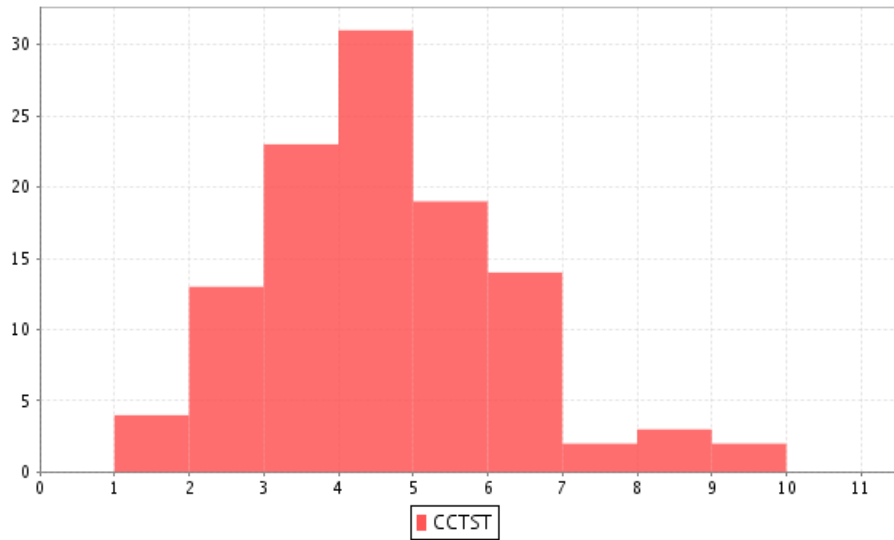
Report Results - CCTST English - 00.1.00 - Dyersburg State CC Advancement - June 23, 2010

## Descriptive Statistics: CCTST, Evaluation And Explanation Scale Score

Skill Name	Size	Mean	Median	Truncated Mean	Standard Deviation
Evaluation And Explanation Scale Score	111	4.13	4.00	4.09	1.65

Skill Name	Standard Error Of Mean	Min	Max	Q1	Q3
Evaluation And Explanation Scale Score	0.16	1.00	9.00	3.00	5.00

**Evaluation And Explanation Scale Score**



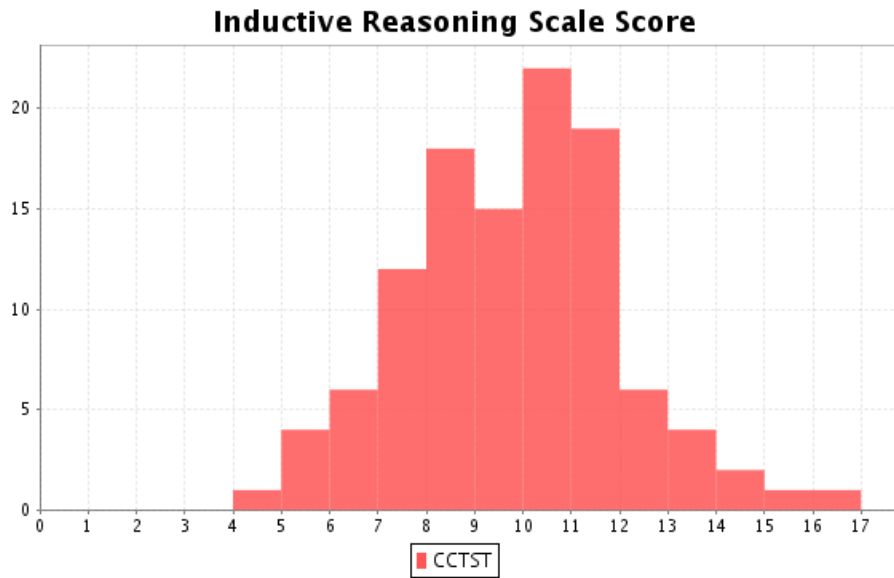
# Insight Assessment

Report Results - CCTST English - 00.1.00 - Dyersburg State CC Advancement - June 23, 2010

## Descriptive Statistics: CCTST, Inductive Reasoning Scale Score

Skill Name	Size	Mean	Median	Truncated Mean	Standard Deviation
Inductive Reasoning Scale Score	111	9.32	9.00	9.30	2.23

Skill Name	Standard Error Of Mean	Min	Max	Q1	Q3
Inductive Reasoning Scale Score	0.21	4.00	16.00	8.00	11.00



# Insight Assessment

Report Results - CCTST English - 00.1.00 - Dyersburg State CC Advancement - June 23, 2010

## Descriptive Statistics: CCTST, Deductive Reasoning Scale Score

Skill Name	Size	Mean	Median	Truncated Mean	Standard Deviation
Deductive Reasoning Scale Score	111	5.87	5.00	5.79	2.41

Skill Name	Standard Error Of Mean	Min	Max	Q1	Q3
Deductive Reasoning Scale Score	0.23	2.00	13.00	4.00	7.00

