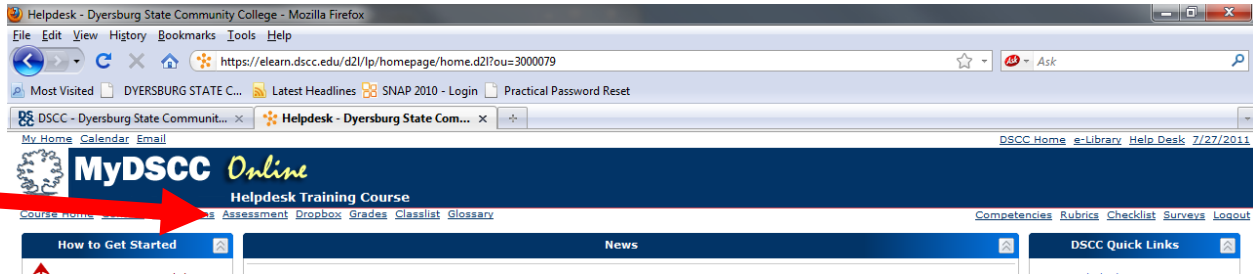
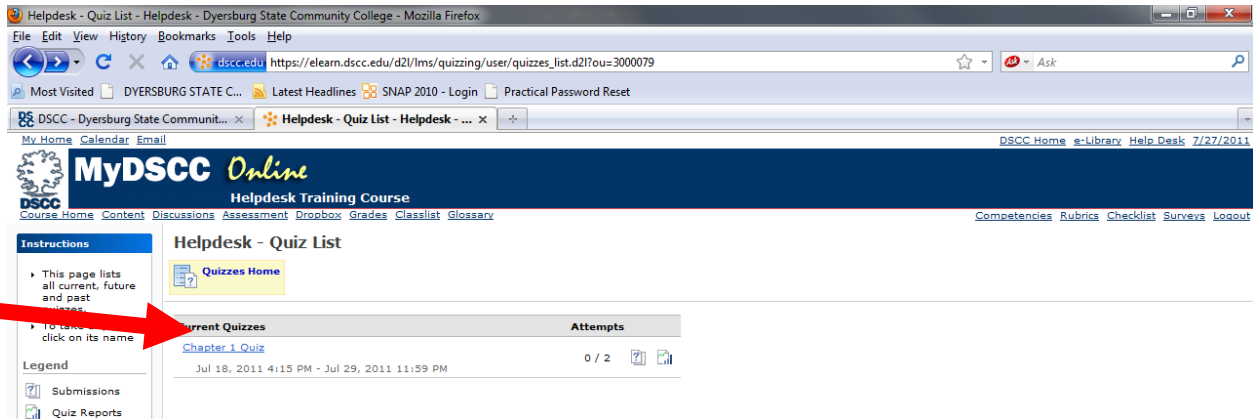


Installing Respondus Lockdown Browser (Inside D2L)

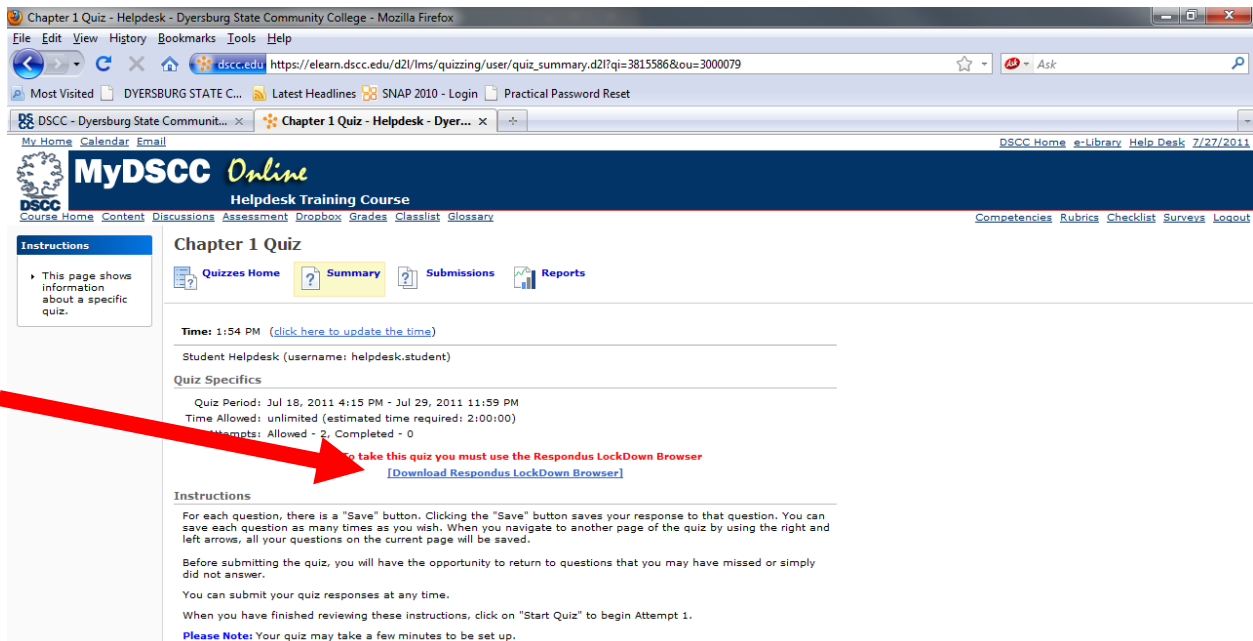
To install Respondus Lockdown Browser while logged into your DSCC Online Course, you will need to navigate to the “Assessments” page.



When your Assessments page loads, you will need to click on the assessment requiring Respondus Lockdown Browser.

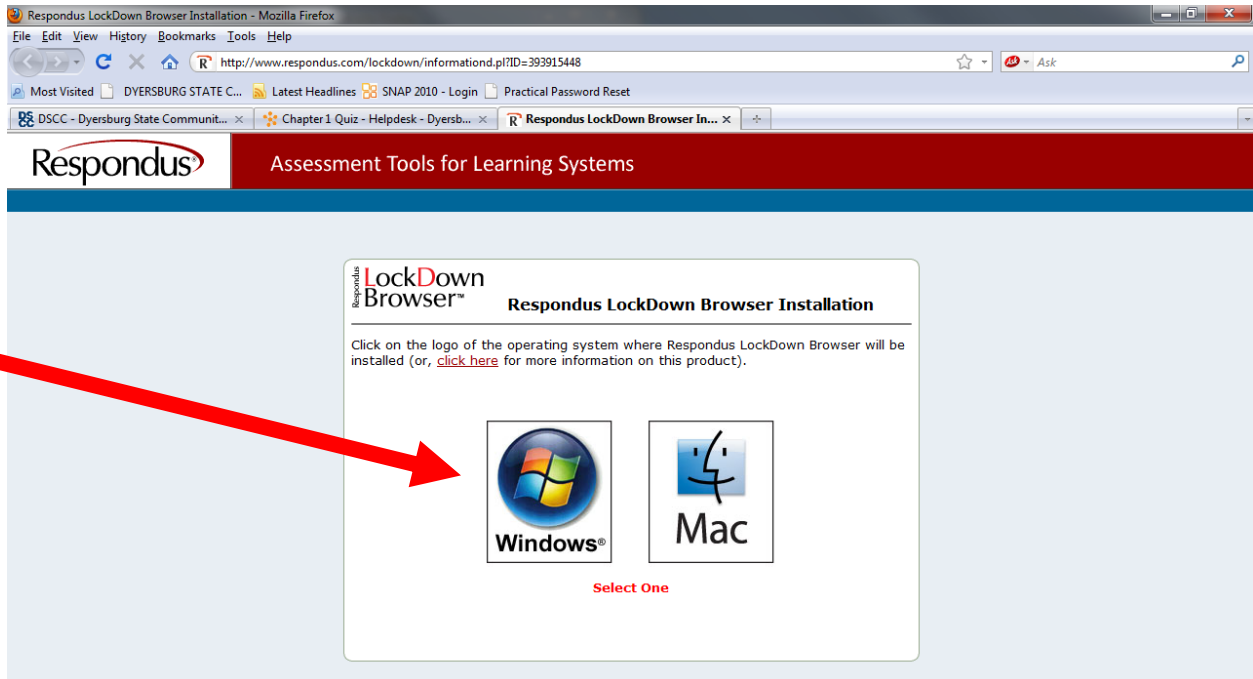


When the page loads, you will need to click the link “Download Respondus LockDown Browser” in the center of the page.

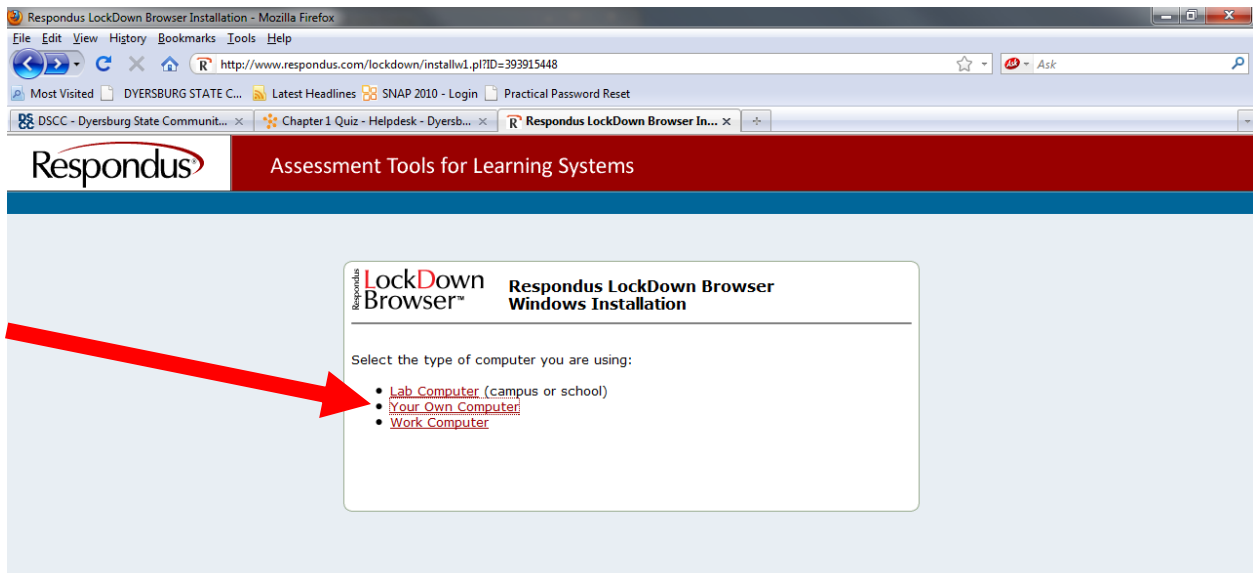


Installing Respondus Lockdown Browser (Inside D2L)

The following page will be displayed once you click the download link in the previous step. You will need to click on the appropriate link based on your operating system you have installed. (For the purpose of this tutorial, we will be showing how to install Respondus Lockdown Browser on a Windows PC.)

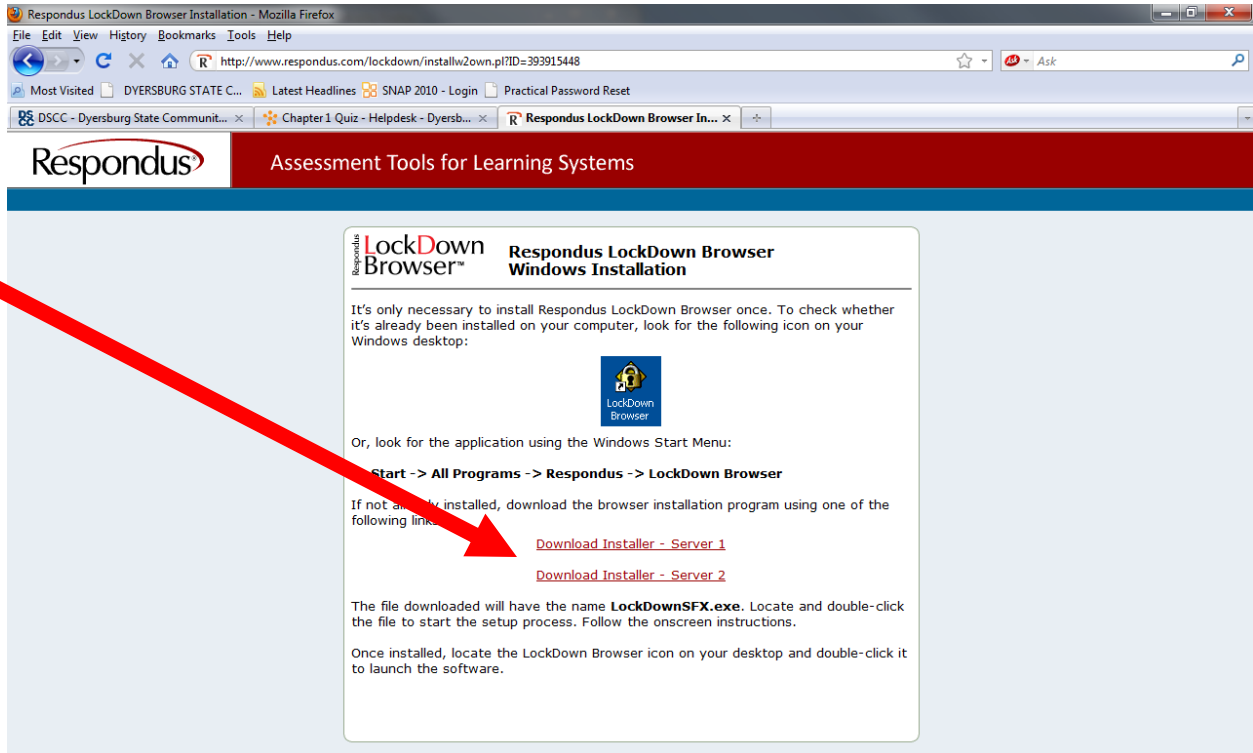


The following page will be displayed once you click the download link. You will click the link for "Your Own Computer."

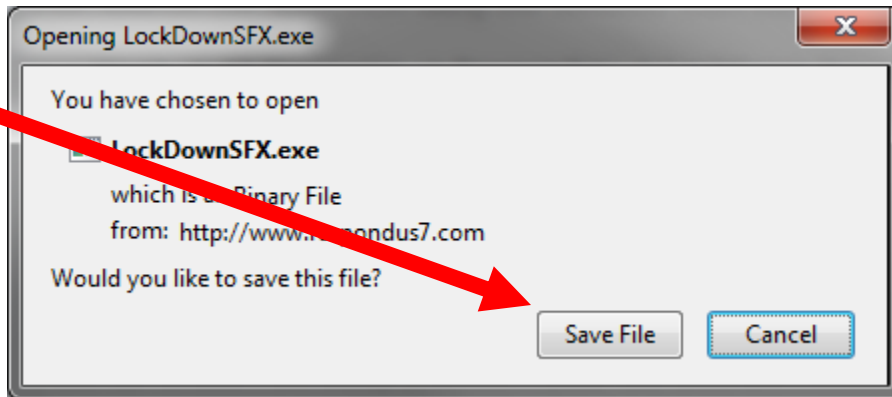


On the next page, you will need to select an Installation Server to download the LockDown Browser. Choose either link, or select the other should you encounter errors with one or the other.

Installing Respondus Lockdown Browser (Inside D2L)

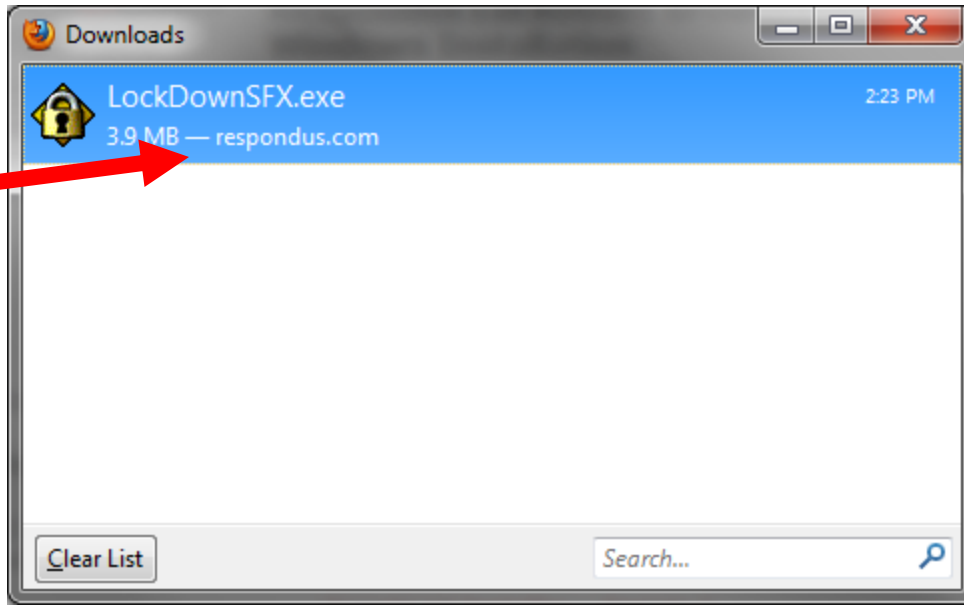


The following steps are if you are using Mozilla Firefox as your default web browser. Select “Save File” on the prompt that displays

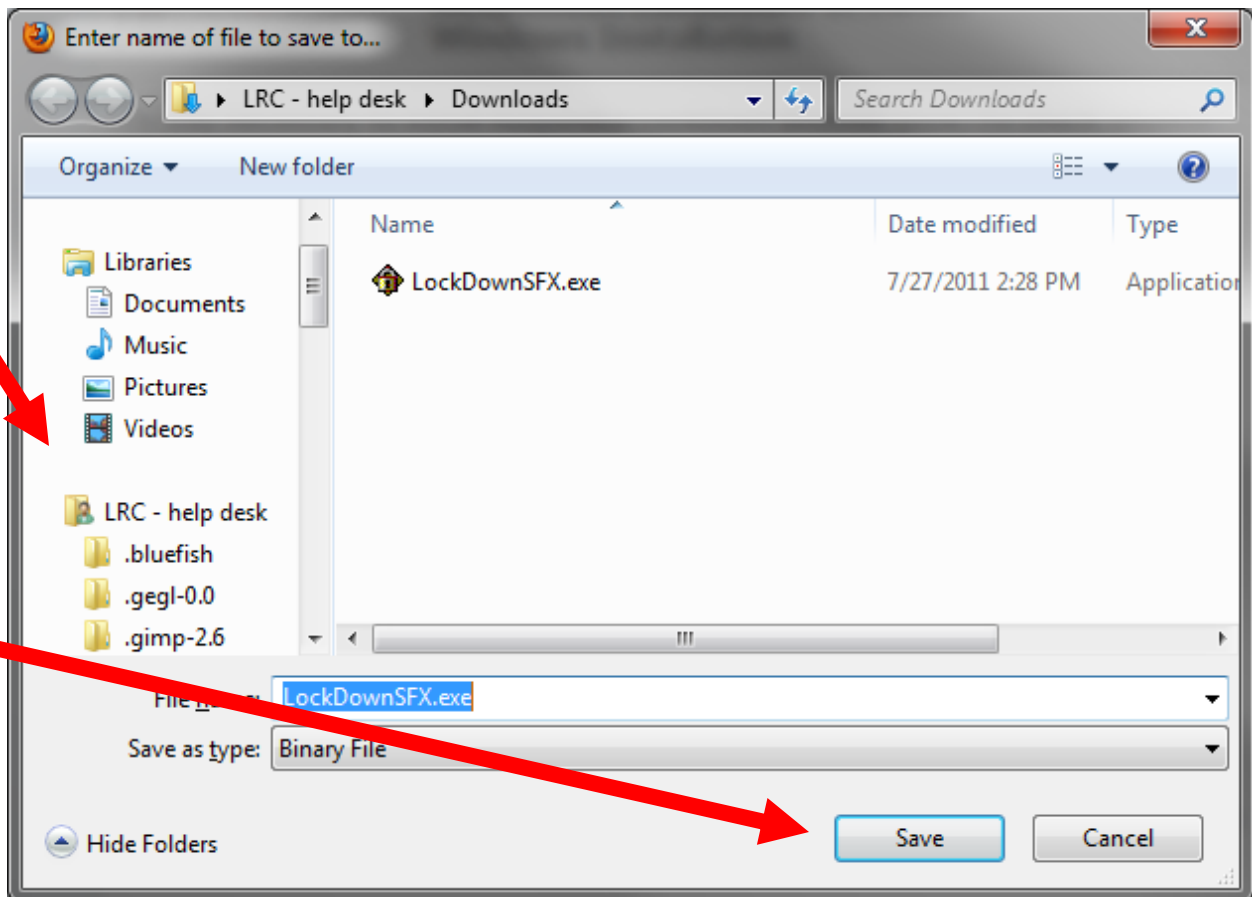


If your browser is set to automatically save downloads, the following prompt will display. You will need to double click “LockDownSFX.exe” in the list.

Installing Respondus Lockdown Browser (Inside D2L)

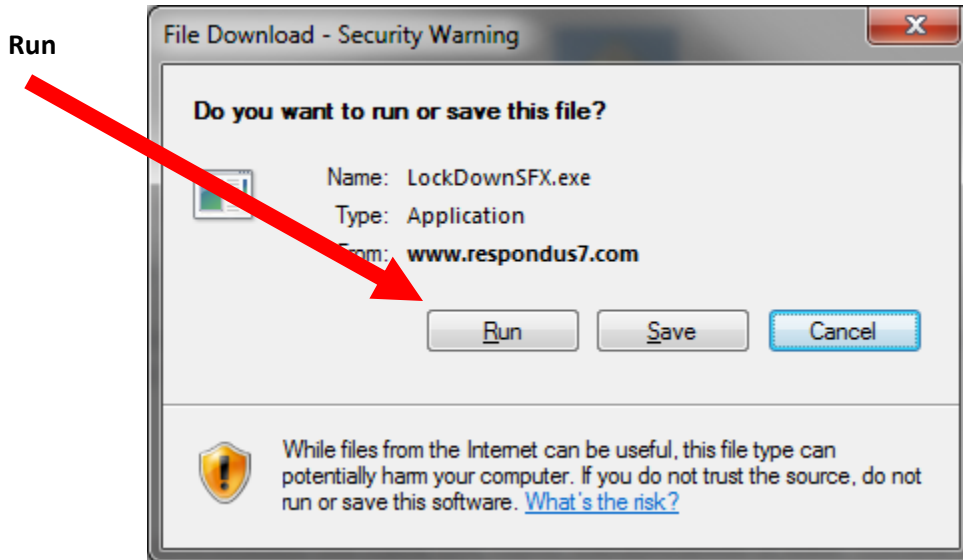


If your browser isn't set to automatically save downloads, the following prompt will show asking you to choose a save location. Choose the location of your choice, and then click "Save". The prompt above will then be displayed.



Installing Respondus Lockdown Browser (Inside D2L)

The following will be displayed if you are using Microsoft Internet Explorer as your default web browser. You will need to click “Run” on the prompt that displays after clicking the Installation Server link.



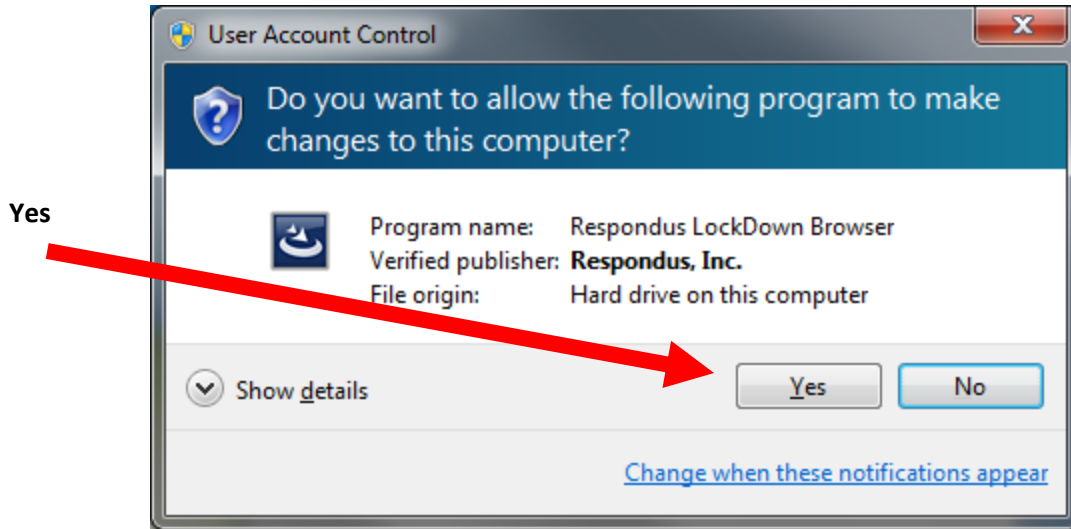
Click “Run” again on the Security Warning dialogue box that displays.

Now that we have downloaded Respondus LockDown Browser, we need to install it. After you have “Run” the installation file, the following prompt will display. Click on “Click to Install”.

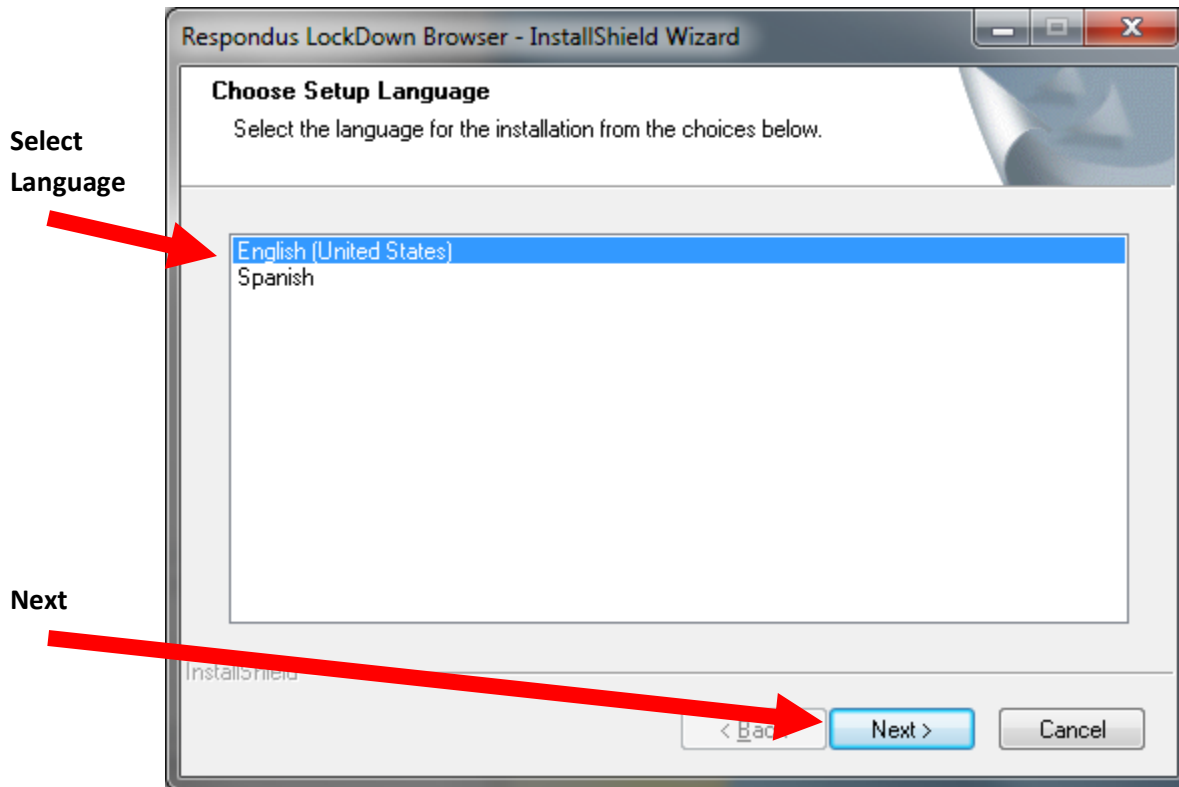


Depending on your version of Windows, you may receive the following User Account Control security prompt. Click “Yes”.

Installing Respondus Lockdown Browser (Inside D2L)

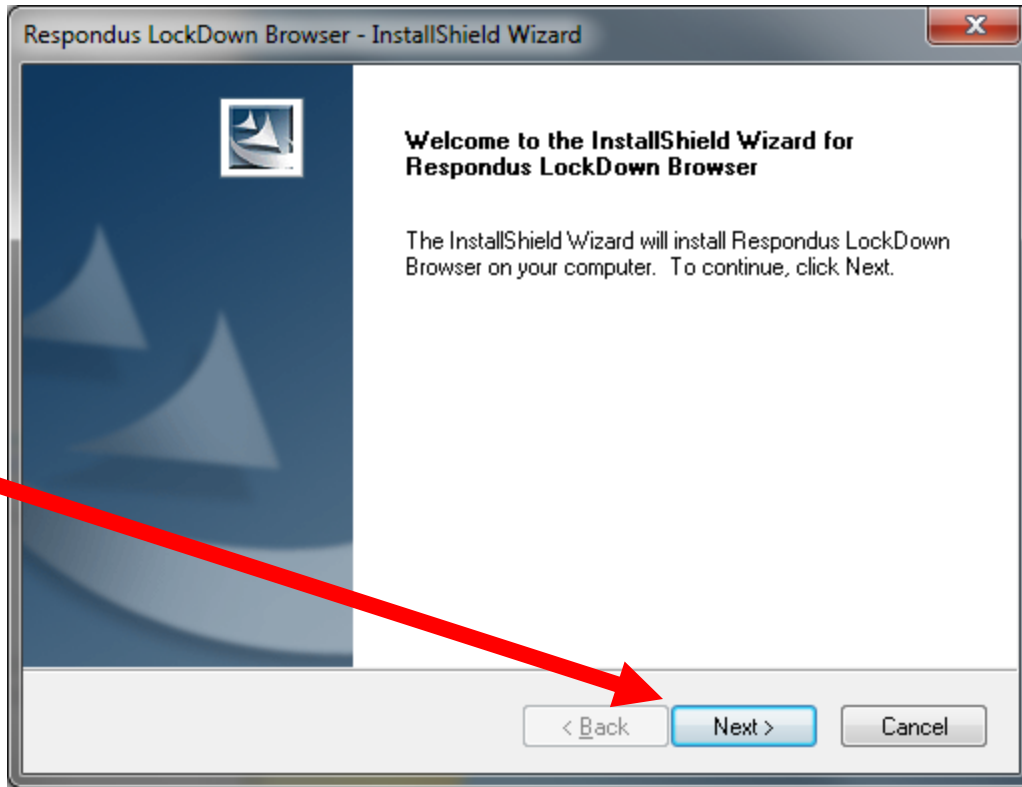


On the next prompt, select the appropriate language and click "Next".

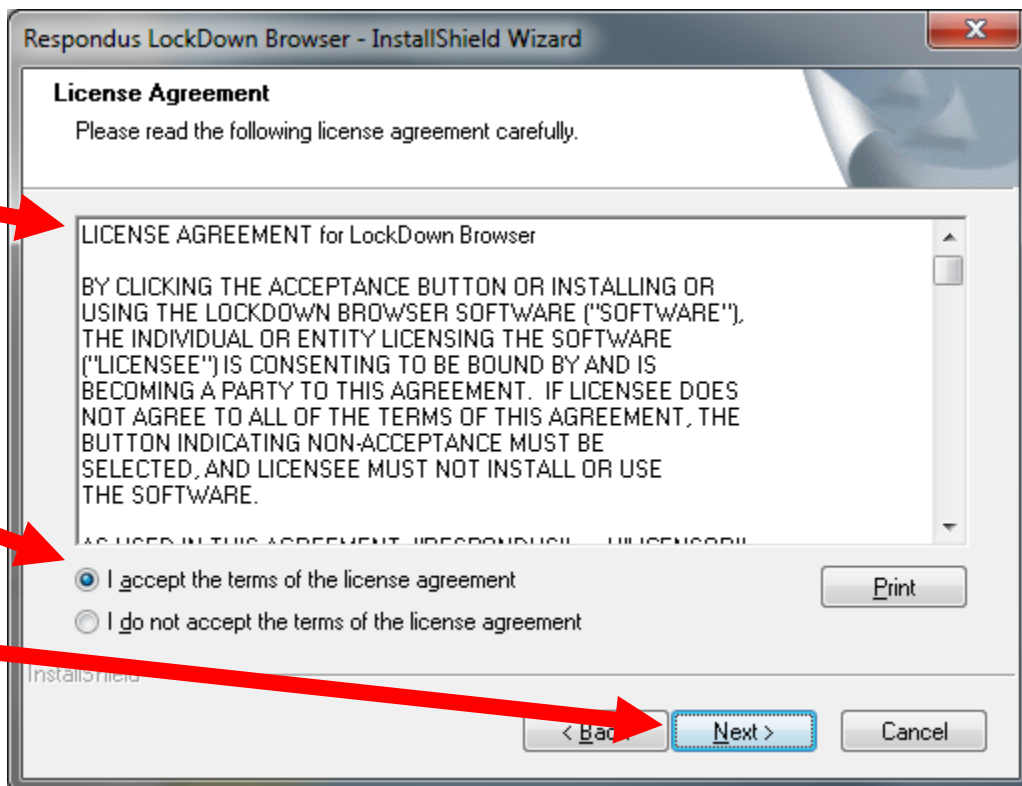


When the installation bar completes, the following prompt will be displayed. Click "Next".

Installing Respondus Lockdown Browser (Inside D2L)

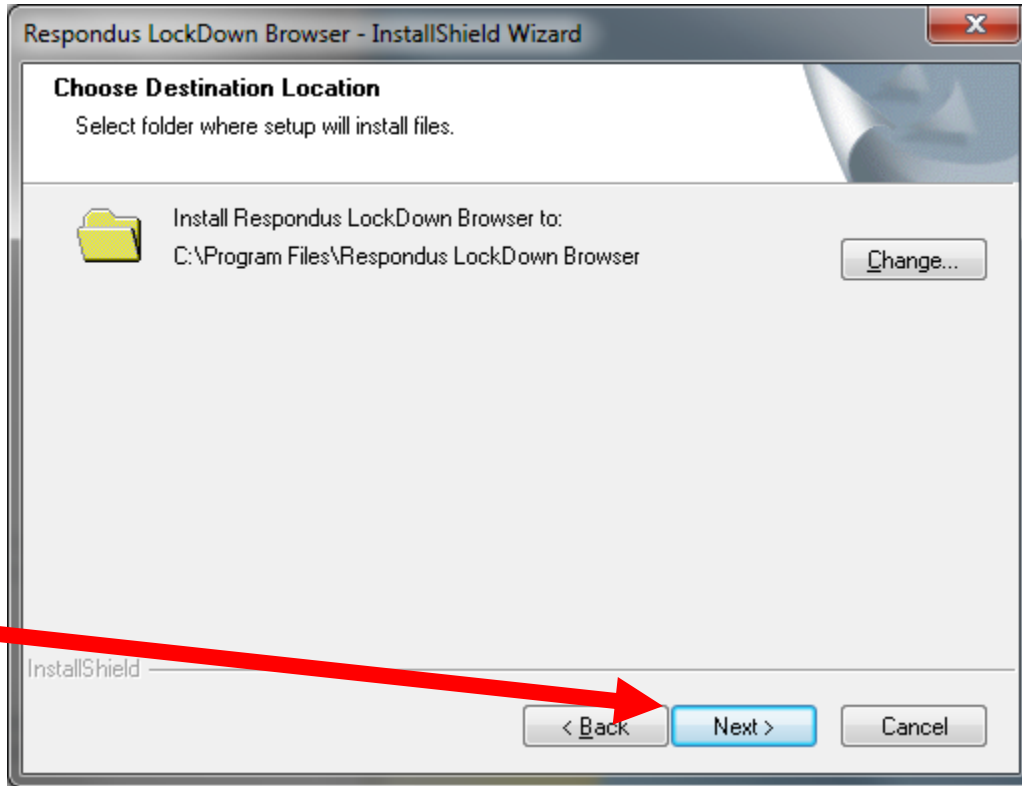


Next, you will be prompted with the License Agreement. You may read over the agreement and then select the bubble next to "I Accept the Terms of the License Agreement". Click "Next".



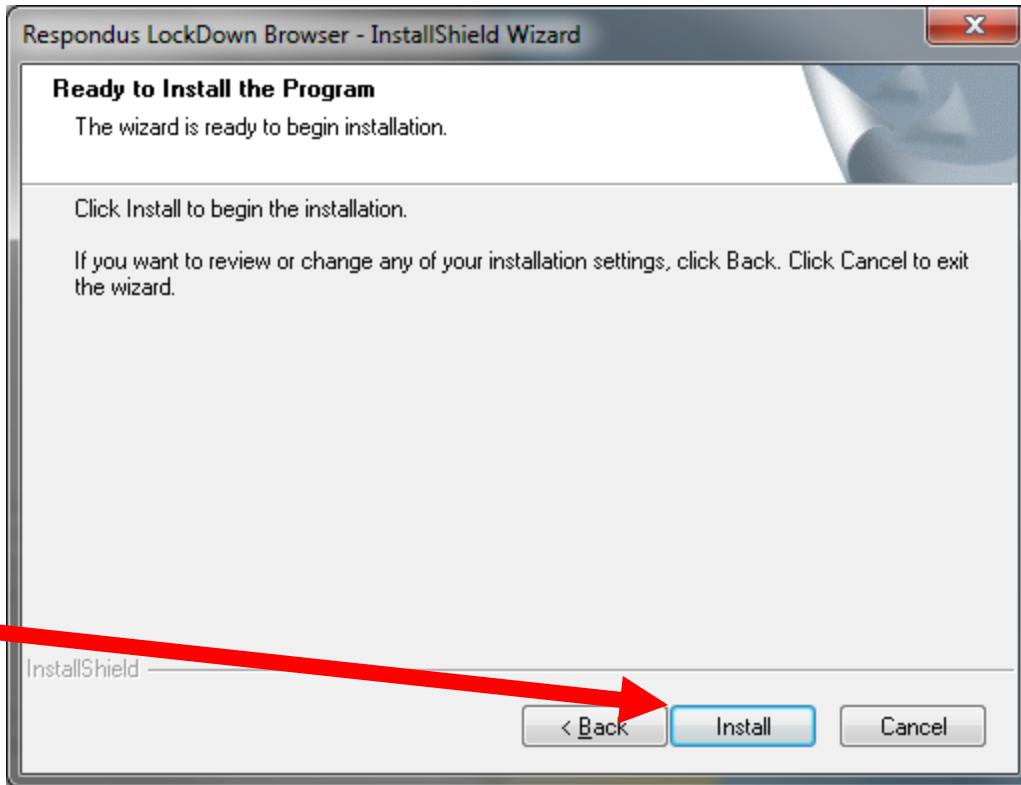
Installing Respondus Lockdown Browser (Inside D2L)

Click "Next" on the Choose Destination Location prompt.



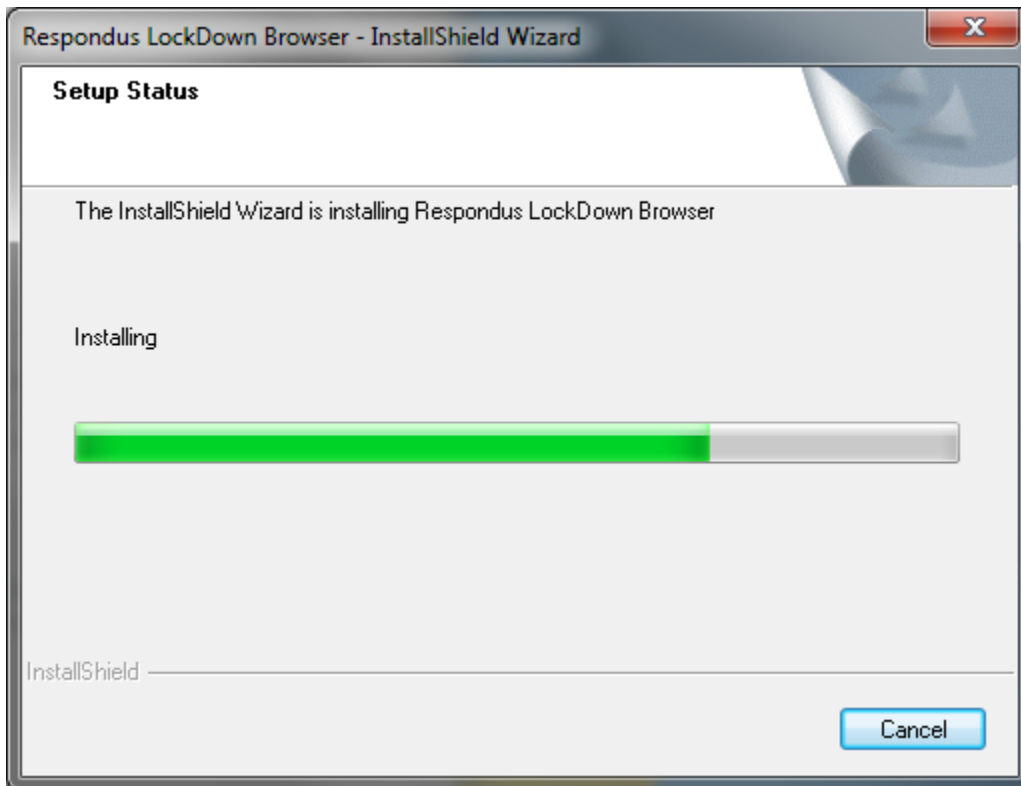
The next prompt lets you know you are Ready to Install the Program. Click "Install".

Installing Respondus Lockdown Browser (Inside D2L)



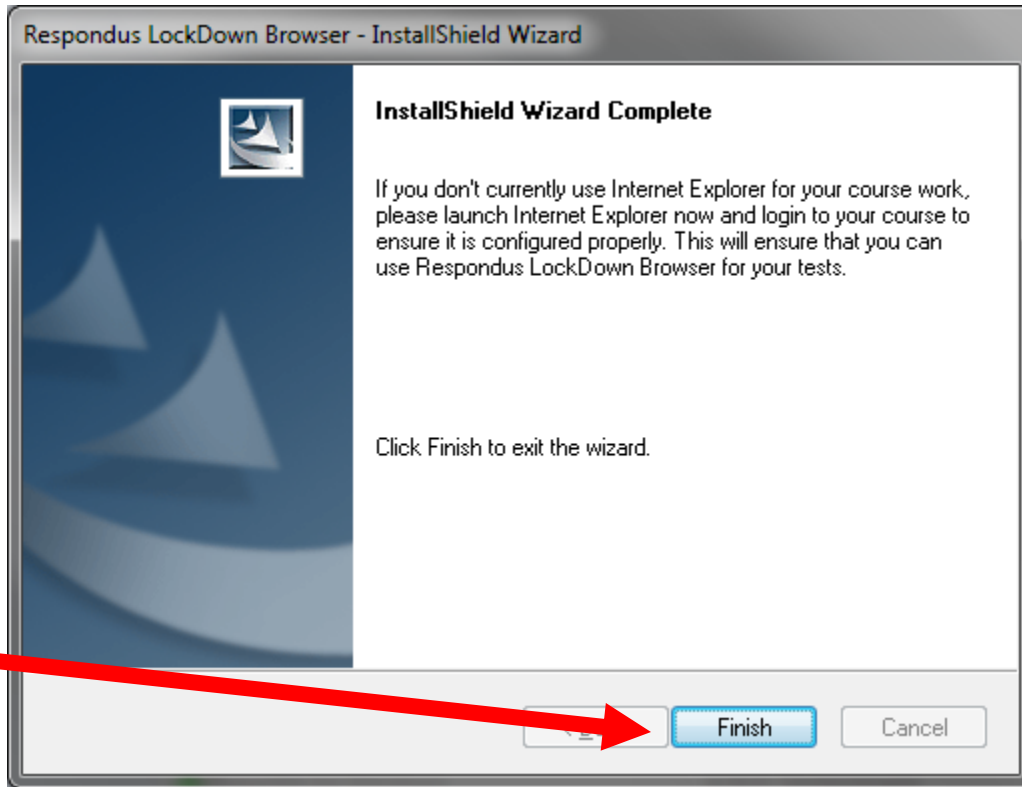
Install

The following prompt will show the status of the installation.



Installing Respondus Lockdown Browser (Inside D2L)

Once the installation is complete, the following prompt will display. Click “Finish”.



You have successfully installed Respondus LockDown Browser.