

# DSCC SERVICE AREA 7 COUNTY MAP

## Dual Enrollment per High School in FALL 2020

Brighton High School.....	73
Covington High School.....	54
Dyer County High School.....	88
Dyersburg High School.....	71
Halls High School.....	30
Lake County High School.....	26
Munford High School.....	131
Peabody High School.....	48
Ripley High School.....	34
South Fulton High School.....	11
Tipton Rosemark Academy.....	25
Other Area High Schools.....	12

**Total Dual Enrollment.....614**

## Poverty level and income for Tennessee and the United States

	TN	USA
Median household income	\$45,219	\$53,889
Per capita income	\$25,227	\$28,930
Individuals below poverty level, percent	17.6%	15.5%

## 2020 FALL Enrollment numbers

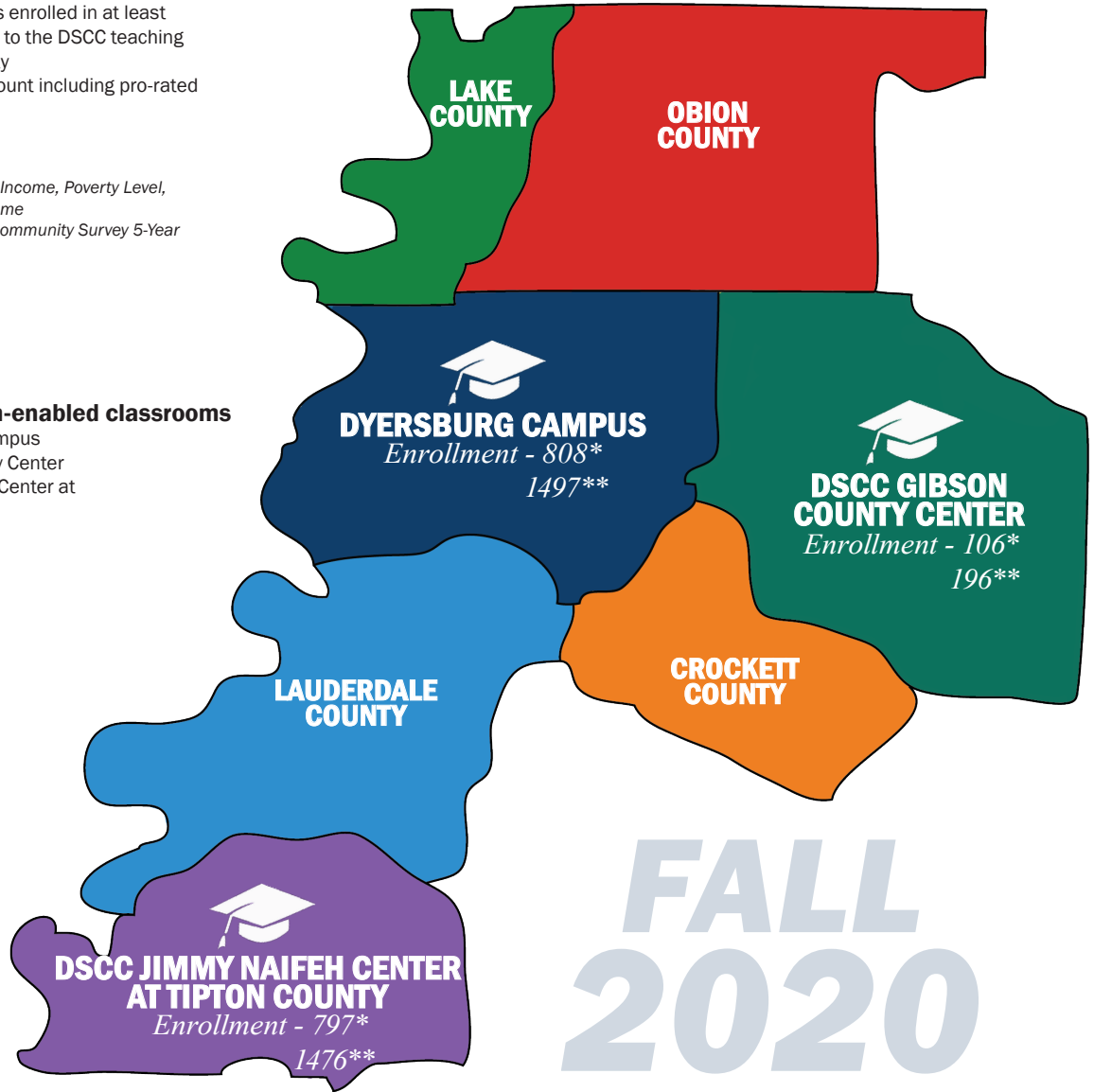
\*Number of students enrolled in at least one course attached to the DSCC teaching location in this county  
 \*\*Duplicated headcount including pro-rated online enrollments

Source:

<sup>1</sup>Population, Per Capita Income, Poverty Level, Median Household Income  
 2009-2013 American Community Survey 5-Year Estimates  
 Revised 09/22/2015

## Sites with Zoom-enabled classrooms

DSCC Dyersburg Campus  
 DSCC Gibson County Center  
 DSCC Jimmy Naifeh Center at Tipton County



# FALL 2020

**CROCKETT COUNTY**

- County pop. - 14,499
- Per capita inc. - \$20,542
- Poverty level - 19.3%
- Med. HH income - \$42,047

**DYER COUNTY**

- County pop. - 37,576
- Per capita inc. - \$23,936
- Poverty level - 18.5%
- Med. HH income - \$43,762

**GIBSON COUNTY**

- County pop. - 49,175
- Per capita inc. - \$20,948
- Poverty level - 17.1%
- Med. HH income - \$41,886

**LAKE COUNTY**

- County pop. - 7,526
- Per capita inc. - \$13,330
- Poverty level - 26.9%
- Med. HH income - \$34,966

**LAUDERDALE COUNTY**

- County pop. - 26,297
- Per capita inc. - \$16,217
- Poverty level - 22.3%
- Med. HH income - \$37,915

**OBION COUNTY**

- County pop. - 30,520
- Per capita inc. - \$21,650
- Poverty level - 22.7%
- Med. HH income - \$39,886

**TIPTON COUNTY**

- County pop. - 61,446
- Per capita inc. - \$23,572
- Poverty level - 13.9%
- Med. HH income - \$60,167