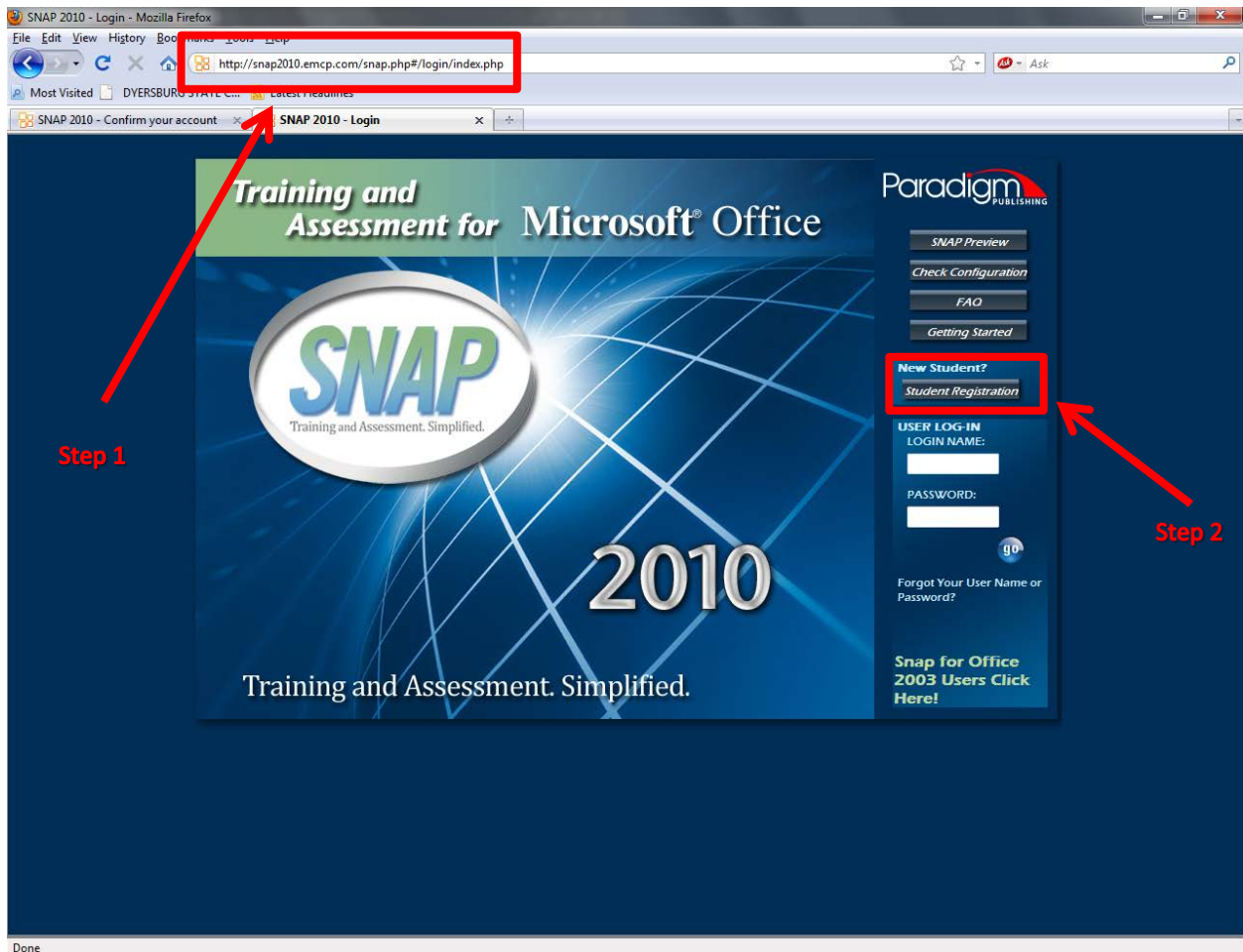


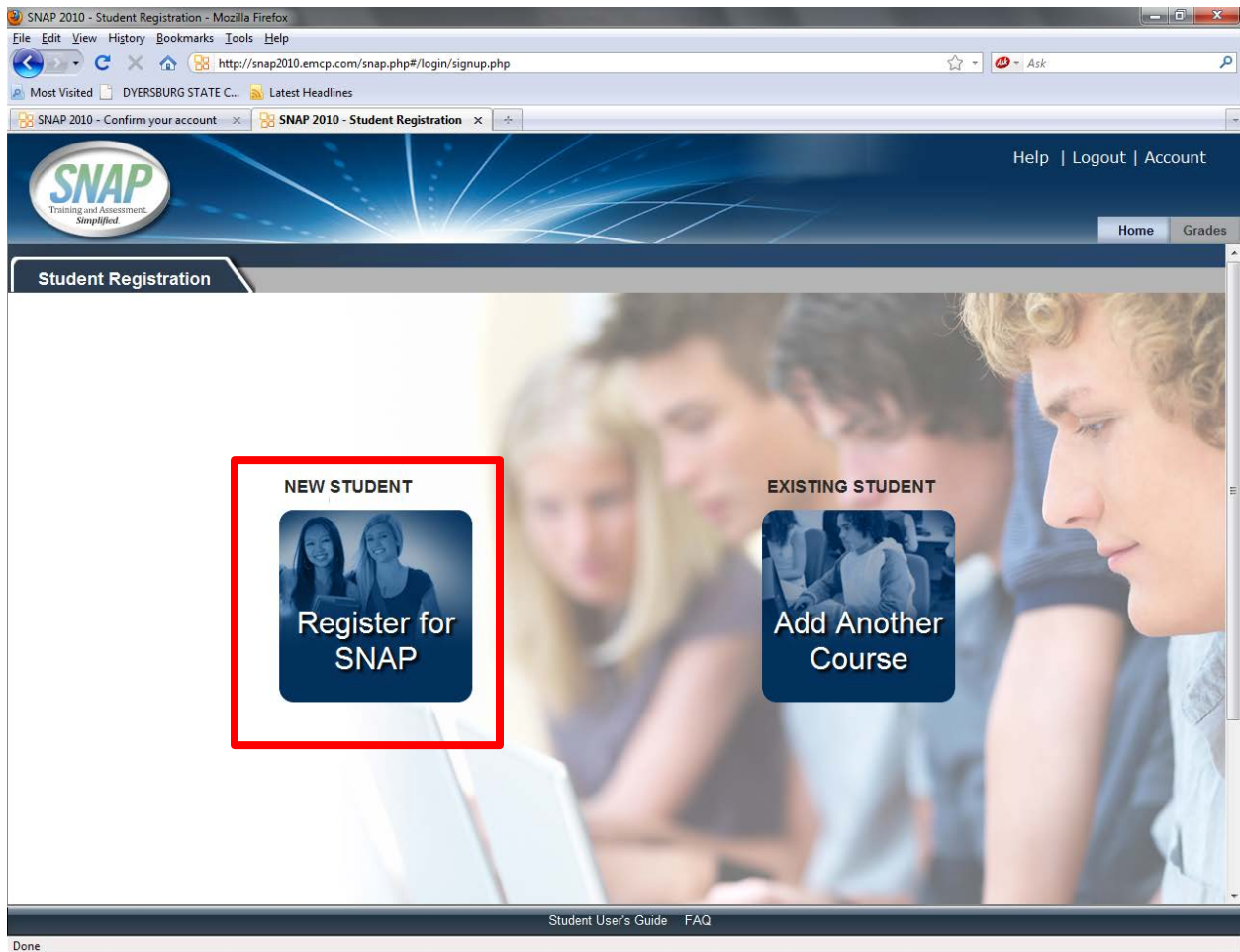
# SNAP 2010

---

## STUDENT REGISTRATION TUTORIAL



1. Navigate to [snap2010.emcp.com](http://snap2010.emcp.com)
2. Click the Student Registration button.



1. Click on New Student – Register for SNAP.

SNAP 2010 - New account - Mozilla Firefox

File Edit View History Bookmarks Tools Help

http://snap2010.emcp.com/snap.php#/login/signup.php?action=signup

Most Visited DYERSBURG STATE C... Latest Headlines

SNAP 2010 - Confirm your account SNAP 2010 - New account

Help | Logout | Account

Home Grades

### New account

**Choose your username and password**

Username\*

Password\*

**More details**

Email address\*

Email (again)\*

First name\*

Last name\*

City/town\*

State/Province\*

Zip Code\*

Timezone\*

**Course Enrollment**

Enrollment Key\*

Activation Code\*

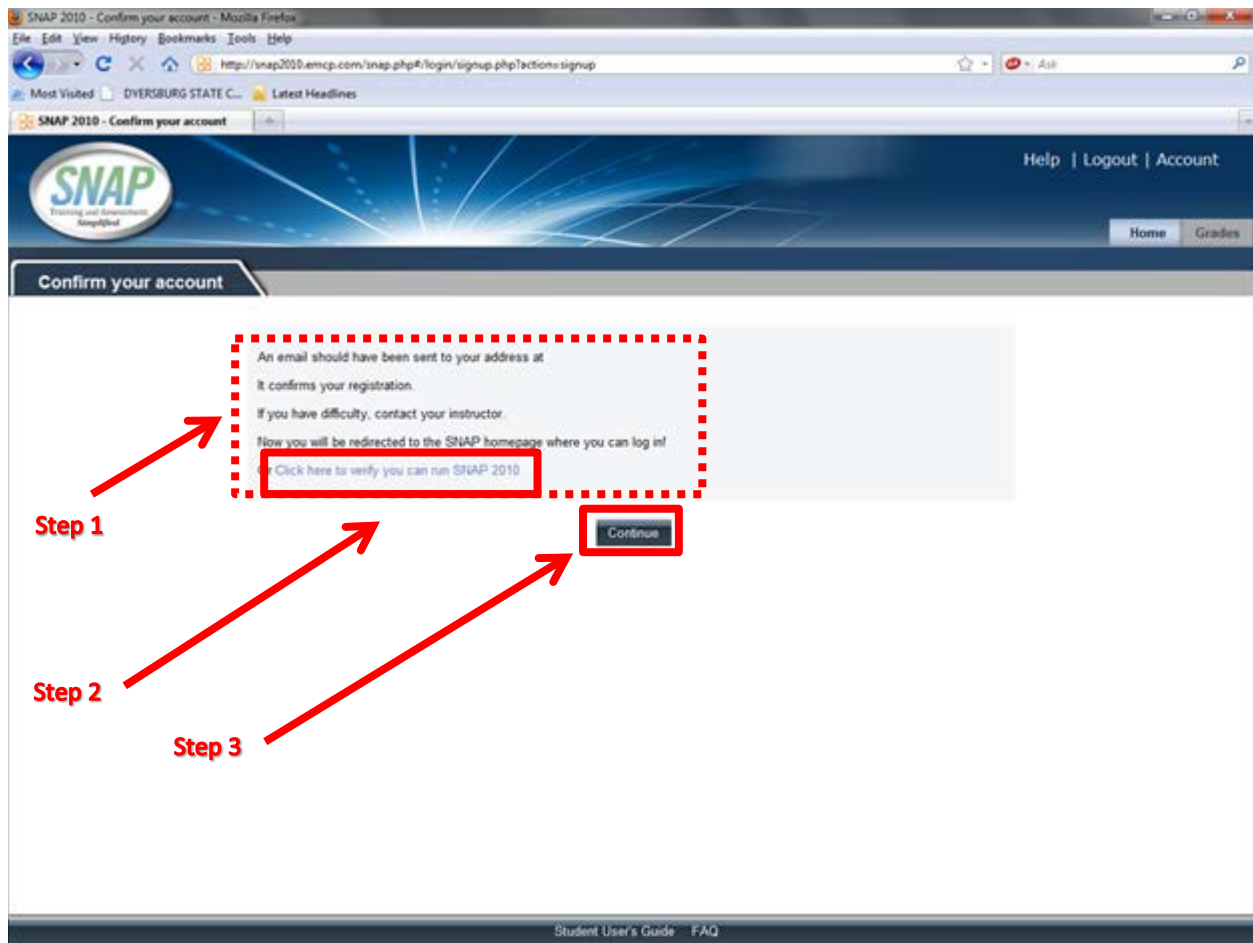
There are required fields in this form marked\*.

Student User's Guide FAQ

Done

1. Complete the Form. (make a note of the username/password combination you use)
2. Click the Create my new account button.

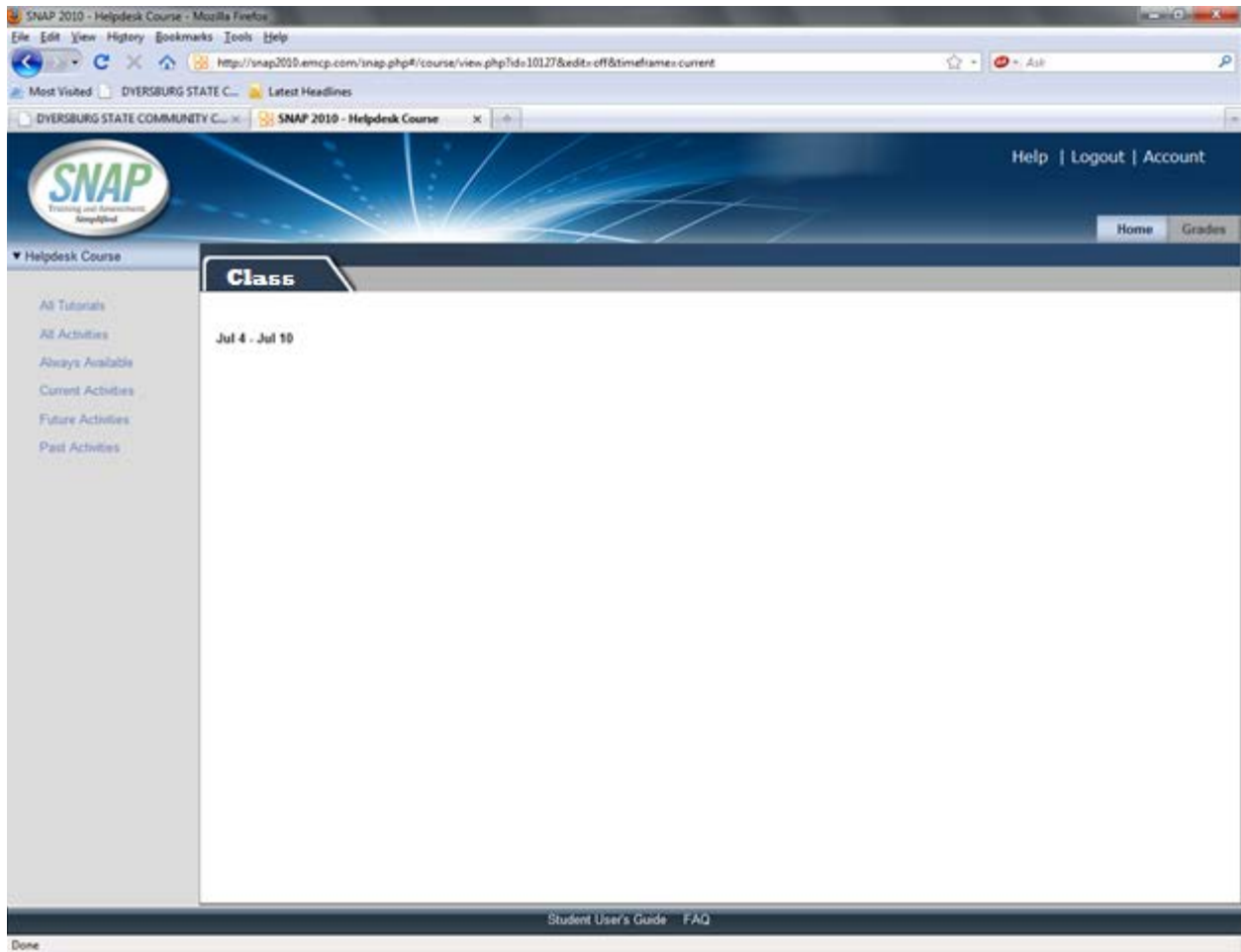
\*The Enrollment Key and Activation Code are provided by your instructor



1. You have successfully registered your account.
2. If you haven't already, you may click the link "click here to verify you can run SNAP 2010" to install the SNAP Plugin.
3. Click the Continue button to be carried back to the SNAP 2010 Homepage.



1. Enter your Login Name and Password that you just finished registering.
2. Click the Go button.



Welcome to SNAP 2010.