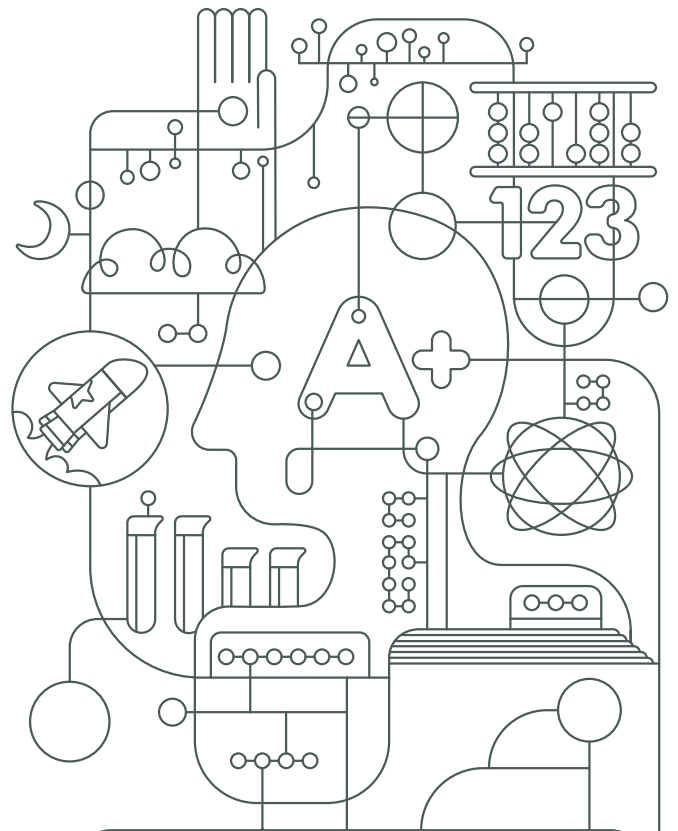


STEM Exploration for The Real World

EVERFI empowers teachers to bring critical skills education into their classrooms. With digital lessons focused on topics like financial literacy, entrepreneurship, STEM exploration, and health & wellness, EVERFI helps schools and educators prepare their students to be successful in the real world. Thanks to hundreds of partners who share this mission, EVERFI provides these resources to K-12 schools and students **free of charge**.



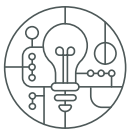
In addition to interactive digital resources aligned to state standards, educators also receive:



Real time reporting to see students' baseline knowledge and growth



Lesson plans and discussion questions



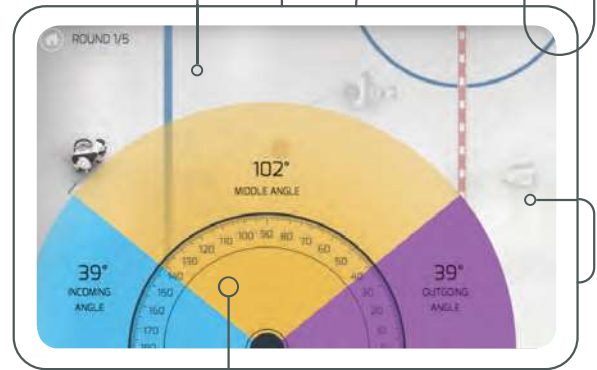
Access to EVERFI's ever-growing library of digital curriculum



Student scholarship opportunities

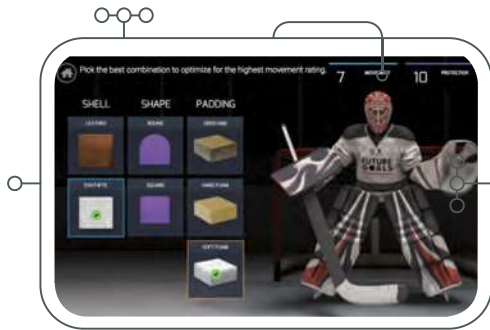


Personalized support from a local School Implementation Manager

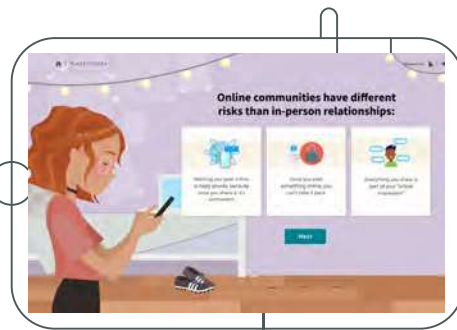


Shown Above:
1) Hockey Scholar-Math Edition
2) Endeavor - STEM Career Exploration

Learn more at everfi.com/k-12



Hockey Scholar



Ignition



Endeavor STEM Career Exploration

Future Goals - Math Edition

Recommended Grade Level: 5-8th
 Total Lessons: 6 (20-30 minutes each)
 Total Time: 2-2.5 hours
 Languages: English, French

Topics Covered:

- Calculating Area
- Coordinate Planes
- Graphical Analysis
- Measuring Angles

Ignition - Digital Wellness & Safety

Recommended Grade Level: 6-9th
 Total Lessons: 6 (30 minutes each)
 Total Time: 3 hours
 Languages: English; Spanish & French Coming Soon

Topics Covered:

- Digital Footprint
- Internet Safety
- Cyberbullying
- Conducting Online Research

Future Goals - Science Edition

Recommended Grade Level: 5-8th
 Total Lessons: 6 (20-30 minutes each)
 Total Time: 2-2.5 hours
 Languages: English, French

Topics Covered:

- Phases of Matter & Temperature
- Experimental Variables
- Kinetic & Potential Energy
- Types of Forces

Endeavor - STEM Literacy & Career Exploration

Recommended Grade Level: 6-9th
 Total Lessons: 4 (20-30 minutes each)
 Total Time: 2 hours
 Languages: English

Topics Covered:

- Engineering Design Process
- Materials and Material Science
- Interpreting/Analyzing Data
- STEM Career Exploration

Get started today at
everfi.com/k-12

EVERFI is the leading education technology company that provides learners of all ages with education for the real world, through innovative and scalable digital learning.

EVERFI

2300 N Street NW
 Washington DC, 20037
 202-602-1295
www.everfi.com/k-12